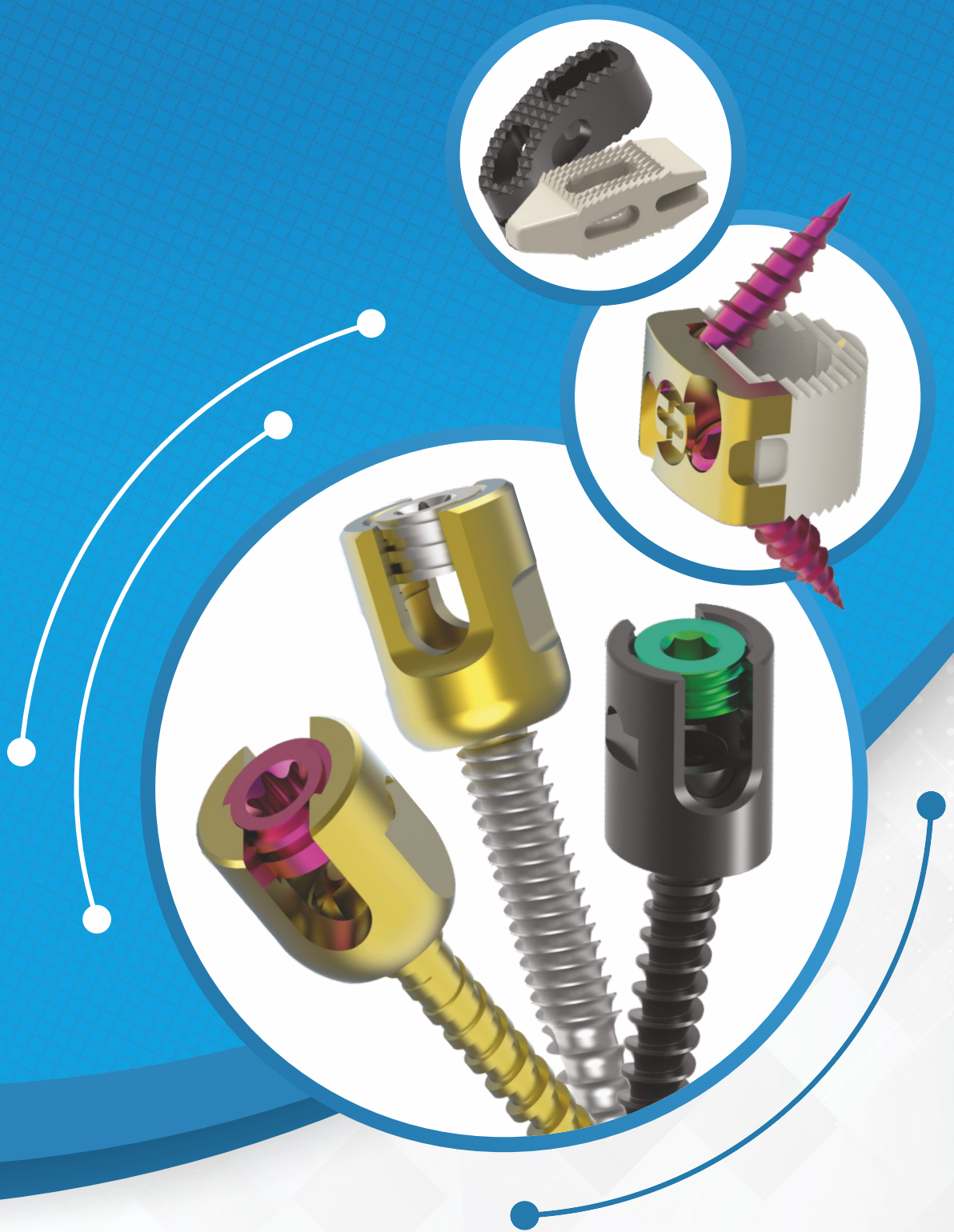


CORE[®]

SPINE SYSTEM





We feel proud to introduce ourselves as a foremost manufacturer and exporter in orthopedic implants and instruments. We offer a wide & growing range of the highest quality orthopedic implants, instrumentation, Medical Devices, Medical Disposables, Medical Equipments and Hospital furnitures along with other associated products at reasonable cost.

We have got a sound and firm position in the orthopedic industry by having a sturdy **network of distributors domestically & around the globe**. We are having the most modern technologies and are one of the leading manufacturers (since 2014) with pinnacle superiority of Ortho-Implants and instrumentations. We offer a wide range of **orthopedic Implants, Instrumentation, Medical Devices, Medical Disposables, Medical Equipments, Laboratory Consumables & Equipment and Hospital furnitures**. We have employed Quality management System which confirms to **ISO 9001 & ISO 13485** standards.

Our all products are **CE marked** and licensed by **Indian FDA** for manufacturing. Based on the principles of Quality Excellency, our product satisfies the expectations of our customers. We are associated with major medical Institutions of India for supplying the products. We continually participate in almost all major exhibitions of Orthopedics around the world to promote our products.

Our motto is to provide the **Best Quality Products** and to continue as a leading manufacturer and supplier of these products in the global market. We are growing rapidly in terms of world-wide sales because of our extensive product range, its quality & services by orthopedic surgeons.



**Sharma
Orthopedic (India)
Pvt. Ltd.**

INDEX



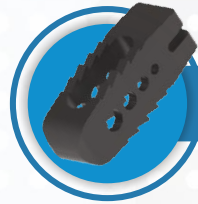
CORE® II SPINE SYSTEM..... 01 TO 11



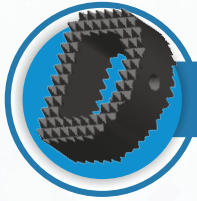
MINIMALLY INVASIVE SYSTEM 23 TO 24



OCCIPITAL SYSTEM 12 TO 14



PLIF CAGE SYSTEM 25 TO 25



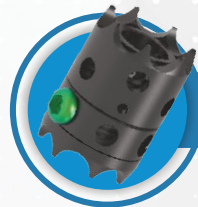
WEDGE SHAPED CAGE..... 15 TO 15



TLIF CAGE SYSTEM 26 TO 26



CERVICAL SYSTEM 16 TO 18



EXPANDABLE CAGE 27 TO 27



PEDICLE SYSTEM 19 TO 22



MESH CAGE 27 TO 27

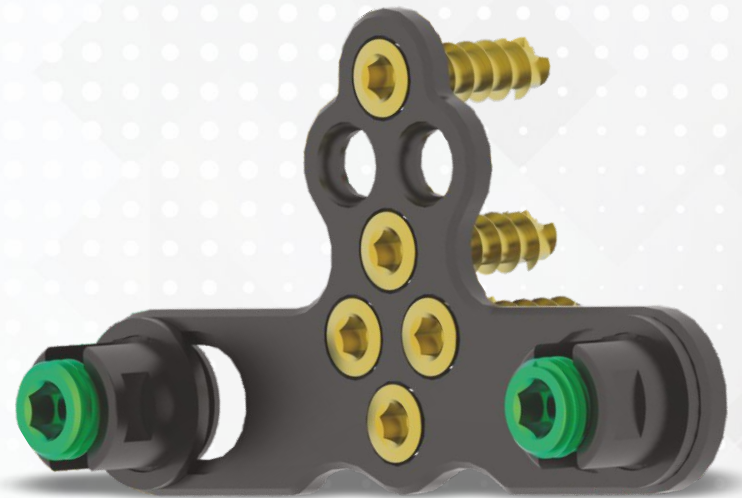


CORE[®] II Occipital Plate

LENGTH	CAT. NO. TITANIUM
1 HOLE	SO20.TIT.14033
2 HOLE	SO20.TIT.14034

CORE[®] II Occipital Plate With Multi Holes

LENGTH	CAT. NO. TITANIUM
7 HOLE (28.0 MM X 40.0 MM)	SO20.TIT.14031
7 HOLE (38.0 MM X 50.0 MM)	SO20.TIT.14032



CORE[®] II Occipital Screw 4.3mm

LENGTH	CAT. NO. TITANIUM
6.0 MM	SO20.TIT.14625
8.0 MM	SO20.TIT.14037
10.0 MM	SO20.TIT.14038
12.0 MM	SO20.TIT.14039
14.0 MM	SO20.TIT.14040
16.0 MM	SO20.TIT.14041

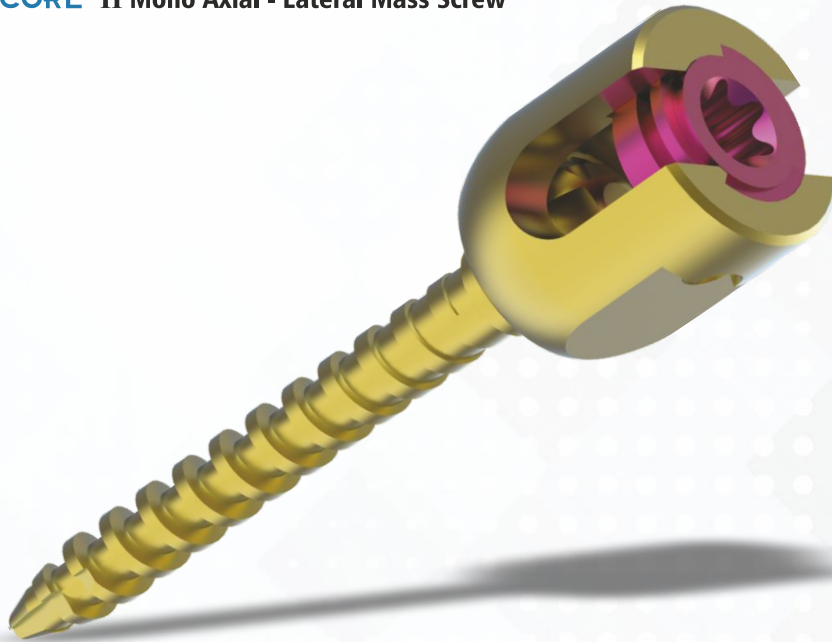


CORE[®] II Poly Axial - Lateral Mass Screw

LENGTH	CAT. NO. TITANIUM	
	3.5 MM	4.0 MM
12.0 MM	SO20.TIT.13979	SO20.TIT.13992
14.0 MM	SO20.TIT.13980	SO20.TIT.13993
16.0 MM	SO20.TIT.13981	SO20.TIT.13994
18.0 MM	SO20.TIT.13982	SO20.TIT.13995
20.0 MM	SO20.TIT.13983	SO20.TIT.13996
22.0 MM	SO20.TIT.13984	SO20.TIT.13997
24.0 MM	SO20.TIT.13985	SO20.TIT.13998
26.0 MM	SO20.TIT.13986	SO20.TIT.13999
28.0 MM	SO20.TIT.13987	SO20.TIT.14000
30.0 MM	SO20.TIT.13988	SO20.TIT.14001
32.0 MM	SO20.TIT.13989	SO20.TIT.14002
34.0 MM	SO20.TIT.13990	SO20.TIT.14003
36.0 MM	SO20.TIT.13991	SO20.TIT.14004



CORE[®] II Mono Axial - Lateral Mass Screw

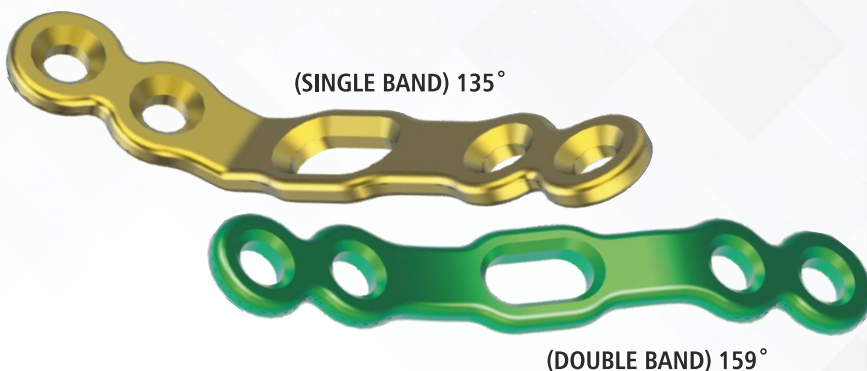
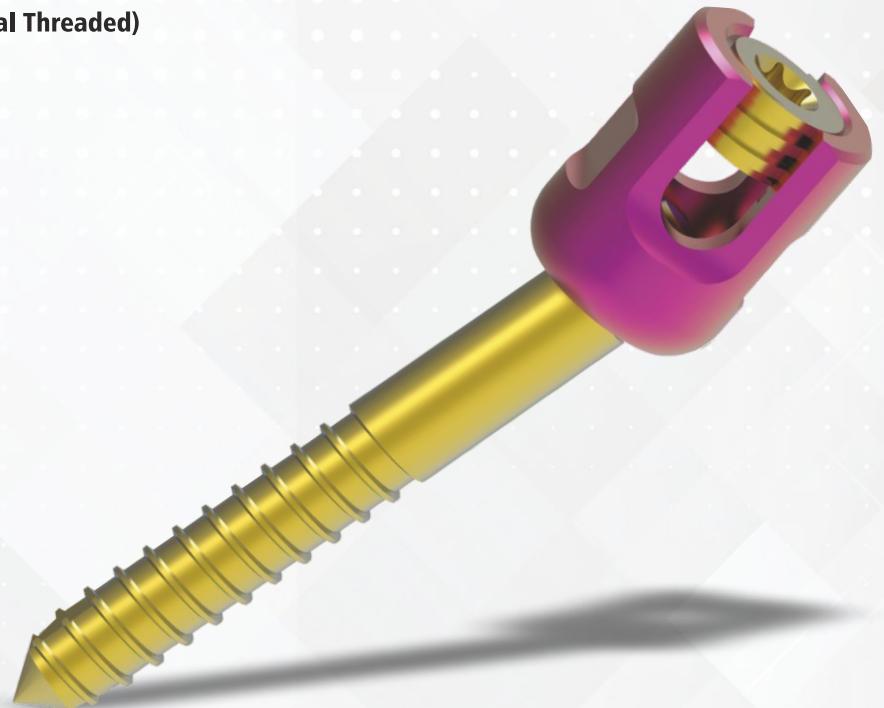


LENGTH	CAT. NO. TITANIUM	
	3.5 MM	4.0 MM
12.0 MM	SO20.TIT.14915	SO20.TIT.14928
14.0 MM	SO20.TIT.14916	SO20.TIT.14929
16.0 MM	SO20.TIT.14917	SO20.TIT.14930
18.0 MM	SO20.TIT.14918	SO20.TIT.14931
20.0 MM	SO20.TIT.14919	SO20.TIT.14932
22.0 MM	SO20.TIT.14920	SO20.TIT.14933
24.0 MM	SO20.TIT.14921	SO20.TIT.14934
26.0 MM	SO20.TIT.14922	SO20.TIT.14935
28.0 MM	SO20.TIT.14923	SO20.TIT.14936
30.0 MM	SO20.TIT.14924	SO20.TIT.14937
32.0 MM	SO20.TIT.14925	SO20.TIT.14938
34.0 MM	SO20.TIT.14926	SO20.TIT.14939
36.0 MM	SO20.TIT.14927	SO20.TIT.14940

CORE[®] II Poly Axial - Lateral Mass Screw (Partial Threaded)

LENGTH	CAT. NO. TITANIUM	
	3.5 MM	4.0 MM

12.0 MM	SO20.TIT.14005	SO20.TIT.14018
14.0 MM	SO20.TIT.14006	SO20.TIT.14019
16.0 MM	SO20.TIT.14007	SO20.TIT.14020
18.0 MM	SO20.TIT.14008	SO20.TIT.14021
20.0 MM	SO20.TIT.14009	SO20.TIT.14022
22.0 MM	SO20.TIT.14010	SO20.TIT.14023
24.0 MM	SO20.TIT.14011	SO20.TIT.14024
26.0 MM	SO20.TIT.14012	SO20.TIT.14025
28.0 MM	SO20.TIT.14013	SO20.TIT.14026
30.0 MM	SO20.TIT.14014	SO20.TIT.14027
32.0 MM	SO20.TIT.14015	SO20.TIT.14028
34.0 MM	SO20.TIT.14016	SO20.TIT.14029
36.0 MM	SO20.TIT.14017	SO20.TIT.14030



CORE[®] II Lamino Mini Plate

LENGTH	CAT. NO. TITANIUM
(SINGLE BAND) 135°	SO20.TIT.14626
(DOUBLE BAND) 159°	SO20.TIT.14627

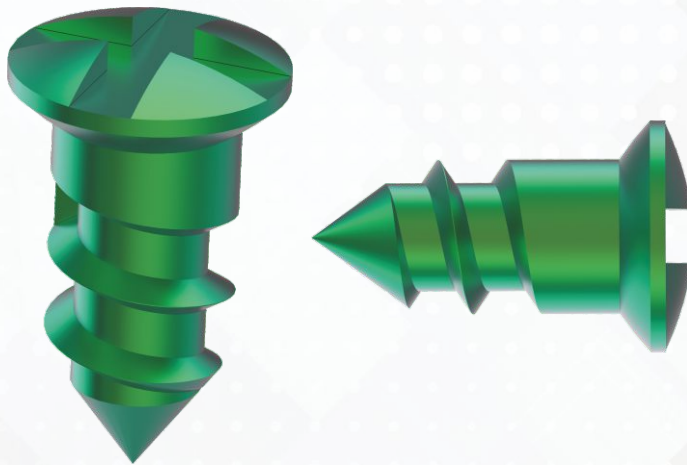
CORE[®] II Lamino Mini T Plate

LENGTH	CAT. NO. TITANIUM
--------	-------------------

(SINGLE BAND) 135°	SO20.TIT.14628
(DOUBLE BAND) 159°	SO20.TIT.14629



CORE[®] II Lamino Mini Cross Slot Screw 2.0 mm (Self Taping)



LENGTH	CAT. NO. TITANIUM
--------	-------------------

4.0 MM	SO20.TIT.14630
5.0 MM	SO20.TIT.14631
6.0 MM	SO20.TIT.14632
7.0 MM	SO20.TIT.14633
8.0 MM	SO20.TIT.14634
9.0 MM	SO20.TIT.14635
10.0 MM	SO20.TIT.14636
11.0 MM	SO20.TIT.14637
12.0 MM	SO20.TIT.14638
13.0 MM	SO20.TIT.14639

LENGTH	CAT. NO. TITANIUM
--------	-------------------

150.0 MM	SO20.TIT.12177
----------	----------------

CORE[®] II Transvers Connector Rod (Tapered) 3.5mm / 5.5mm



CORE[®] II Cervical Cage 0°

DIA. / LENGTH	CAT. NO. TITANIUM
---------------	-------------------

5.0 MM	SO20.TIT.11258
6.0 MM	SO20.TIT.11259
7.0 MM	SO20.TIT.11260
8.0 MM	SO20.TIT.11261
9.0 MM	SO20.TIT.11262
10.0 MM	SO20.TIT.11263

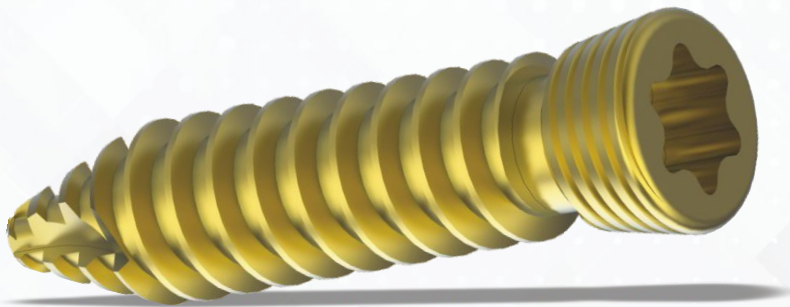


CORE[®] II Cervical Cage 7°

DIA. / LENGTH	CAT. NO. TITANIUM
5.0 MM	SO20.TIT.11266
6.0 MM	SO20.TIT.11267
7.0 MM	SO20.TIT.11268
8.0 MM	SO20.TIT.11269
9.0 MM	SO20.TIT.11270
10.0 MM	SO20.TIT.11271



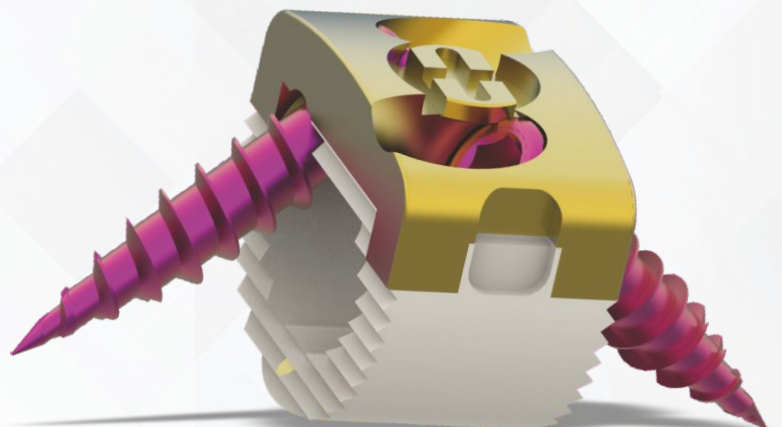
CORE[®] II Cervical Cage Screw 4.0mm

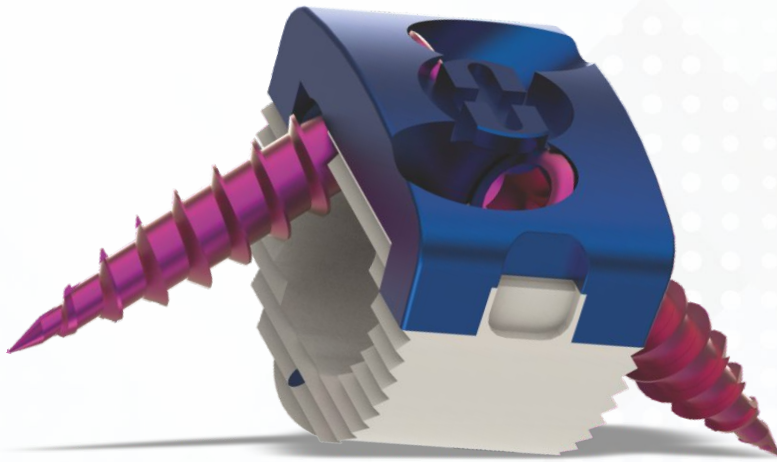


DIA. / LENGTH	CAT. NO. TITANIUM
12.0 MM	SO20.TIT.11275
14.0 MM	SO20.TIT.11276
16.0 MM	SO20.TIT.11277
18.0 MM	SO20.TIT.11278
20.0 MM	SO20.TIT.11279
22.0 MM	SO20.TIT.11280

CORE[®] II Cervical Cage 0° (Hybrid)

DIA. / LENGTH	CAT. NO. TITANIUM
6.0 MM	SO20.TIT.14045
7.0 MM	SO20.TIT.14046
8.0 MM	SO20.TIT.14047
9.0 MM	SO20.TIT.14048
10.0 MM	SO20.TIT.14049



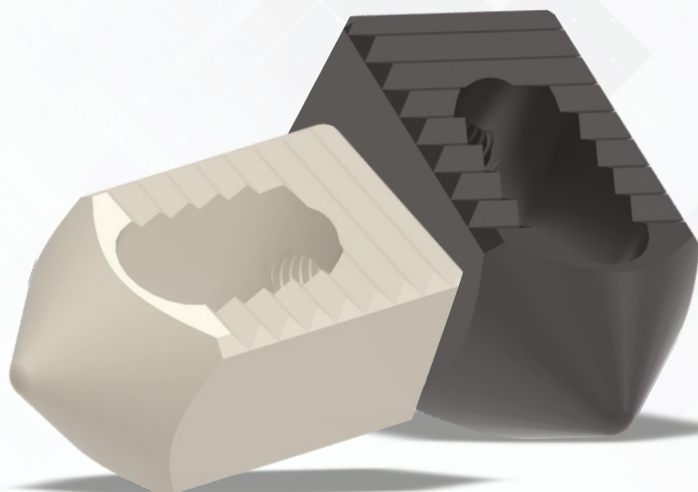
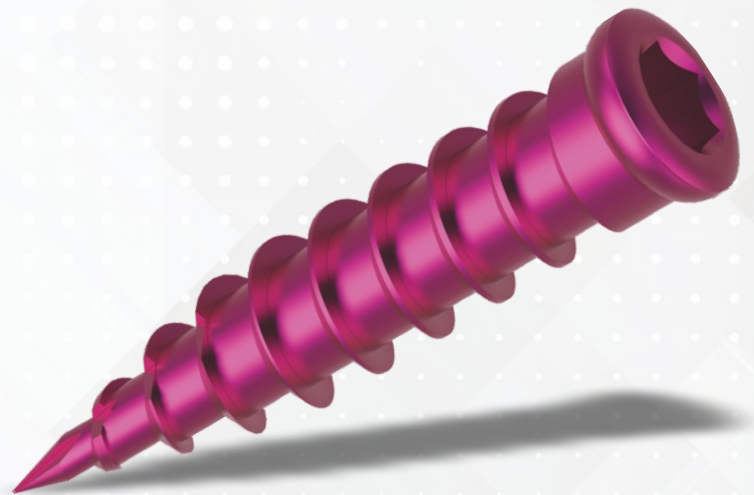


CORE[®] II Cervical Cage 7° (Hybrid)

DIA. / LENGTH	CAT. NO. TITANIUM
6.0 MM	SO20.TIT.14051
7.0 MM	SO20.TIT.14052
8.0 MM	SO20.TIT.14053
9.0 MM	SO20.TIT.14054
10.0 MM	SO20.TIT.14055

CORE[®] II Screw 4.0mm (Hybrid)

DIA. / LENGTH	CAT. NO. TITANIUM
12.0 MM	SO20.TIT.14056
14.0 MM	SO20.TIT.14057
16.0 MM	SO20.TIT.14058
18.0 MM	SO20.TIT.14059
20.0 MM	SO20.TIT.14060
22.0 MM	SO20.TIT.14061



CORE[®] II Cervical Posterior Cage

DIA. / LENGTH	CAT. NO. TIT.	CAT. NO. PEEK
4.0 MM	SO20.TIT.12178	SO20.P12178
4.5 MM	SO20.TIT.12179	SO20.P12179
5.0 MM	SO20.TIT.12180	SO20.P12180
5.5 MM	SO20.TIT.12181	SO20.P12181
6.0 MM	SO20.TIT.12182	SO20.P12182

CORE[®] II Mono Axial - Pedicle Screw

LENGTH	CAT. NO. TITANIUM		
	4.5 MM	5.5 MM	6.5 MM

25.0 MM	SO20.TIT.11285	SO20.TIT.11293	SO20.TIT.11301
30.0 MM	SO20.TIT.11286	SO20.TIT.11294	SO20.TIT.11302
35.0 MM	SO20.TIT.11287	SO20.TIT.11295	SO20.TIT.11303
40.0 MM	SO20.TIT.11288	SO20.TIT.11296	SO20.TIT.11304
45.0 MM	SO20.TIT.11289	SO20.TIT.11297	SO20.TIT.11305
50.0 MM	SO20.TIT.11290	SO20.TIT.11298	SO20.TIT.11306
55.0 MM	SO20.TIT.11291	SO20.TIT.11299	SO20.TIT.11307
60.0 MM	SO20.TIT.11292	SO20.TIT.11300	SO20.TIT.11308



CORE[®] II Poly Axial - Pedicle Screw

LENGTH	CAT. NO. TITANIUM		
	4.5 MM	5.5 MM	6.5 MM

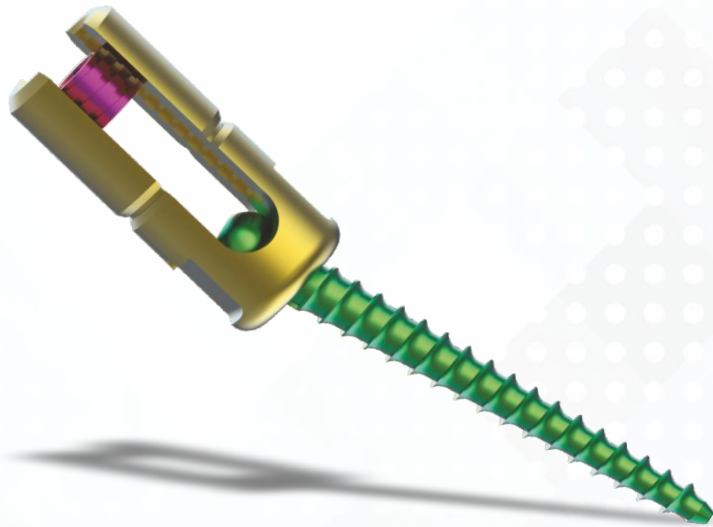
25.0 MM	SO20.TIT.11309	SO20.TIT.11317	SO20.TIT.11325
30.0 MM	SO20.TIT.11310	SO20.TIT.11318	SO20.TIT.11326
35.0 MM	SO20.TIT.11311	SO20.TIT.11319	SO20.TIT.11327
40.0 MM	SO20.TIT.11312	SO20.TIT.11320	SO20.TIT.11328
45.0 MM	SO20.TIT.11313	SO20.TIT.11321	SO20.TIT.11329
50.0 MM	SO20.TIT.11314	SO20.TIT.11322	SO20.TIT.11330
55.0 MM	SO20.TIT.11315	SO20.TIT.11323	SO20.TIT.11331
60.0 MM	SO20.TIT.11316	SO20.TIT.11324	SO20.TIT.11332

CORE[®] II Mono Spondylolisthesis Reduction Screw

LENGTH	CAT. NO. TITANIUM		
	4.5 MM	5.5 MM	6.5 MM

25.0 MM	SO20.TIT.11333	SO20.TIT.11341	SO20.TIT.11349
30.0 MM	SO20.TIT.11334	SO20.TIT.11342	SO20.TIT.11350
35.0 MM	SO20.TIT.11335	SO20.TIT.11343	SO20.TIT.11351
40.0 MM	SO20.TIT.11336	SO20.TIT.11344	SO20.TIT.11352
45.0 MM	SO20.TIT.11337	SO20.TIT.11345	SO20.TIT.11353
50.0 MM	SO20.TIT.11338	SO20.TIT.11346	SO20.TIT.11354
55.0 MM	SO20.TIT.11339	SO20.TIT.11347	SO20.TIT.11355
60.0 MM	SO20.TIT.11340	SO20.TIT.11348	SO20.TIT.11356



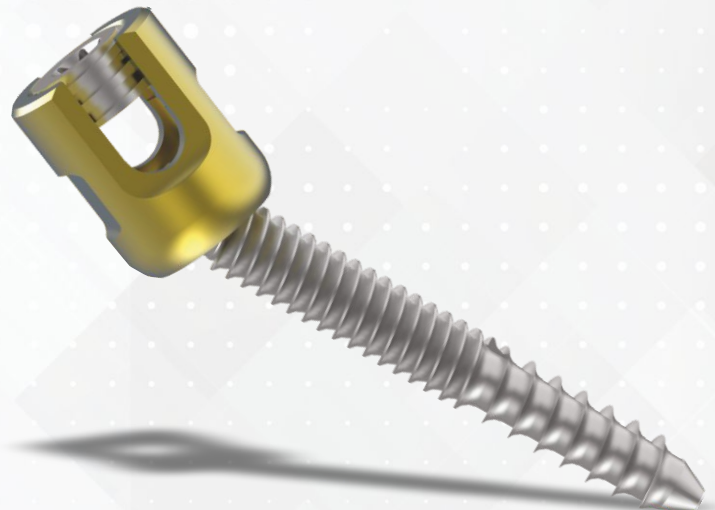


CORE[®] II Poly Spondylolisthesis Reduction Screw

LENGTH	CAT. NO. TITANIUM		
	4.5 MM	5.5 MM	6.5 MM
25.0 MM	SO20.TIT.11357	SO20.TIT.11365	SO20.TIT.11373
30.0 MM	SO20.TIT.11358	SO20.TIT.11366	SO20.TIT.11374
35.0 MM	SO20.TIT.11359	SO20.TIT.11367	SO20.TIT.11375
40.0 MM	SO20.TIT.11360	SO20.TIT.11368	SO20.TIT.11376
45.0 MM	SO20.TIT.11361	SO20.TIT.11369	SO20.TIT.11377
50.0 MM	SO20.TIT.11362	SO20.TIT.11370	SO20.TIT.11378
55.0 MM	SO20.TIT.11363	SO20.TIT.11371	SO20.TIT.11379
60.0 MM	SO20.TIT.11364	SO20.TIT.11372	SO20.TIT.11380

CORE[®] II Poly Axial Pedicle Screw (Dual Thread)

LENGTH	CAT. NO. TITANIUM		
	4.5 MM	5.5 MM	6.5 MM
25.0 MM	SO20.TIT.14062	SO20.TIT.14070	SO20.TIT.14078
30.0 MM	SO20.TIT.14063	SO20.TIT.14071	SO20.TIT.14079
35.0 MM	SO20.TIT.14064	SO20.TIT.14072	SO20.TIT.14080
40.0 MM	SO20.TIT.14065	SO20.TIT.14073	SO20.TIT.14081
45.0 MM	SO20.TIT.14066	SO20.TIT.14074	SO20.TIT.14082
50.0 MM	SO20.TIT.14067	SO20.TIT.14075	SO20.TIT.14083
55.0 MM	SO20.TIT.14068	SO20.TIT.14076	SO20.TIT.14084
60.0 MM	SO20.TIT.14069	SO20.TIT.14077	SO20.TIT.14085

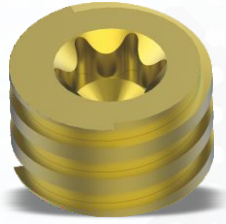


CORE[®] II Poly Axial Pedicle Screw (Dual Thread) Fenestrated

LENGTH	CAT. NO. TITANIUM		
	4.5 MM	5.5 MM	6.5 MM
25.0 MM	SO20.TIT.14086	SO20.TIT.14094	SO20.TIT.14102
30.0 MM	SO20.TIT.14087	SO20.TIT.14095	SO20.TIT.14103
35.0 MM	SO20.TIT.14088	SO20.TIT.14096	SO20.TIT.14104
40.0 MM	SO20.TIT.14089	SO20.TIT.14097	SO20.TIT.14105
45.0 MM	SO20.TIT.14090	SO20.TIT.14098	SO20.TIT.14106
50.0 MM	SO20.TIT.14091	SO20.TIT.14099	SO20.TIT.14107
55.0 MM	SO20.TIT.14092	SO20.TIT.14100	SO20.TIT.14108
60.0 MM	SO20.TIT.14093	SO20.TIT.14101	SO20.TIT.14109

CORE[®] II Inner Nut

LENGTH	CAT. NO. TITANIUM
STD.	SO20.TIT.11381



CORE[®] II Minimal Invasive Poly Axial Pedicle Screw (Dual Thread) Fenestrated

LENGTH	CAT. NO. TITANIUM		
	4.5 MM	5.5 MM	6.5 MM
25.0 MM	SO20.TIT.14110	SO20.TIT.14118	SO20.TIT.14126
30.0 MM	SO20.TIT.14111	SO20.TIT.14119	SO20.TIT.14127
35.0 MM	SO20.TIT.14112	SO20.TIT.14120	SO20.TIT.14128
40.0 MM	SO20.TIT.14113	SO20.TIT.14121	SO20.TIT.14129
45.0 MM	SO20.TIT.14114	SO20.TIT.14122	SO20.TIT.14130
50.0 MM	SO20.TIT.14115	SO20.TIT.14123	SO20.TIT.14131
55.0 MM	SO20.TIT.14116	SO20.TIT.14124	SO20.TIT.14132
60.0 MM	SO20.TIT.14117	SO20.TIT.14125	SO20.TIT.14133

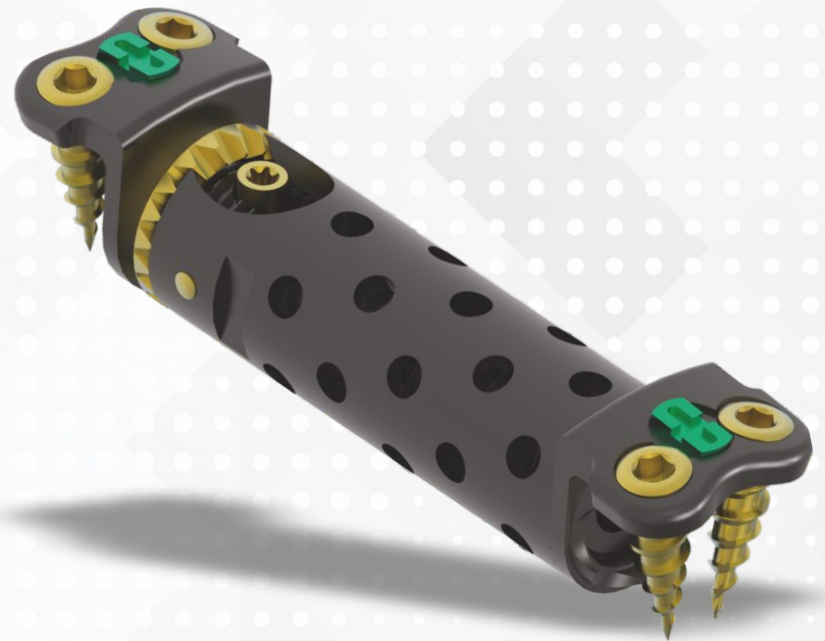


CORE[®] II Expandable Cage (Jack)

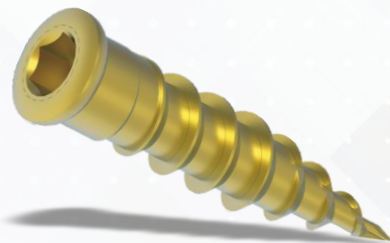
DIA. / LENGTH	CAT. NO. TITANIUM
12.0 MM X 20.0 MM - 24.0MM	SO20.TIT.14134
12.0 MM X 24.0 MM - 28.0MM	SO20.TIT.14135
12.0 MM X 28.0 MM - 38.0MM	SO20.TIT.14136
12.0 MM X 38.0 MM - 52.0MM	SO20.TIT.14137
12.0 MM X 50.0 MM - 70.0MM	SO20.TIT.14138
14.0 MM X 20.0 MM - 24.0MM	SO20.TIT.14139
14.0 MM X 24.0 MM - 28.0MM	SO20.TIT.14140
14.0 MM X 28.0 MM - 38.0MM	SO20.TIT.14141
14.0 MM X 38.0 MM - 52.0MM	SO20.TIT.14142
14.0 MM X 50.0 MM - 70.0MM	SO20.TIT.14143
18.0 MM X 20.0 MM - 24.0MM	SO20.TIT.14144
18.0 MM X 24.0 MM - 28.0MM	SO20.TIT.14145
18.0 MM X 28.0 MM - 38.0MM	SO20.TIT.14146
18.0 MM X 38.0 MM - 52.0MM	SO20.TIT.14147
18.0 MM X 50.0 MM - 70.0MM	SO20.TIT.14148

CORE[®] II Expandable Cage With Plate (Jack)

DIA. / LENGTH	CAT. NO. TITANIUM
12.0 MM X 20.0 MM - 24.0MM	SO20.TIT.14149
12.0 MM X 24.0 MM - 28.0MM	SO20.TIT.14150
12.0 MM X 28.0 MM - 38.0MM	SO20.TIT.14151
12.0 MM X 38.0 MM - 52.0MM	SO20.TIT.14152
12.0 MM X 50.0 MM - 70.0MM	SO20.TIT.14153
14.0 MM X 20.0 MM - 24.0MM	SO20.TIT.14154
14.0 MM X 24.0 MM - 28.0MM	SO20.TIT.14155
14.0 MM X 28.0 MM - 38.0MM	SO20.TIT.14156
14.0 MM X 38.0 MM - 52.0MM	SO20.TIT.14157
14.0 MM X 50.0 MM - 70.0MM	SO20.TIT.14158
18.0 MM X 20.0 MM - 24.0MM	SO20.TIT.14159
18.0 MM X 24.0 MM - 28.0MM	SO20.TIT.14160
18.0 MM X 28.0 MM - 38.0MM	SO20.TIT.14161
18.0 MM X 38.0 MM - 52.0MM	SO20.TIT.14162
18.0 MM X 50.0 MM - 70.0MM	SO20.TIT.14163



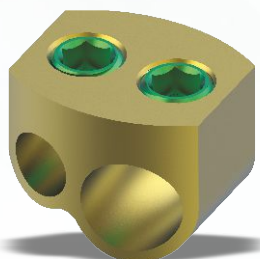
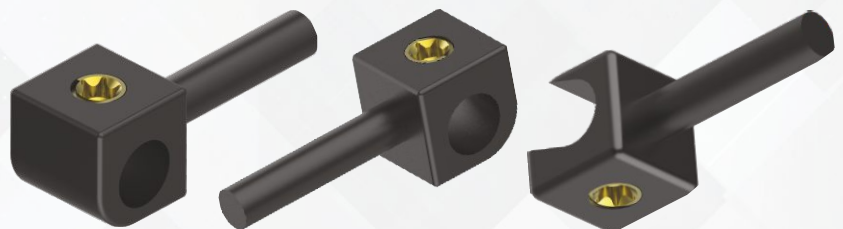
CORE[®] II Self Taping Screw 4.0mm (EJC)



DIA. / LENGTH	CAT. NO. TITANIUM
10.0 MM	SO20.TIT.14164
12.0 MM	SO20.TIT.14165
14.0 MM	SO20.TIT.14166
16.0 MM	SO20.TIT.14167
18.0 MM	SO20.TIT.14168
20.0 MM	SO20.TIT.14169

CORE[®] II Connector 5.5 mm (Iliac Offset)

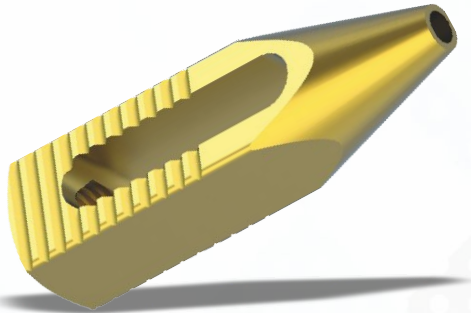
DIA. / LENGTH	CAT. NO. TITANIUM
20.0 MM	SO20.TIT.14624
25.0 MM	SO20.TIT.14170
30.0 MM	SO20.TIT.14171



CORE[®] II Parallel Connector

DIA. / LENGTH	CAT. NO. TITANIUM
5.5 MM X 12.0 MM	SO20.TIT.14620
5.5 MM X 14.0 MM	SO20.TIT.14621
5.5 MM X 16.0 MM	SO20.TIT.14622
5.5 MM X 3.5 MM	SO20.TIT.14623

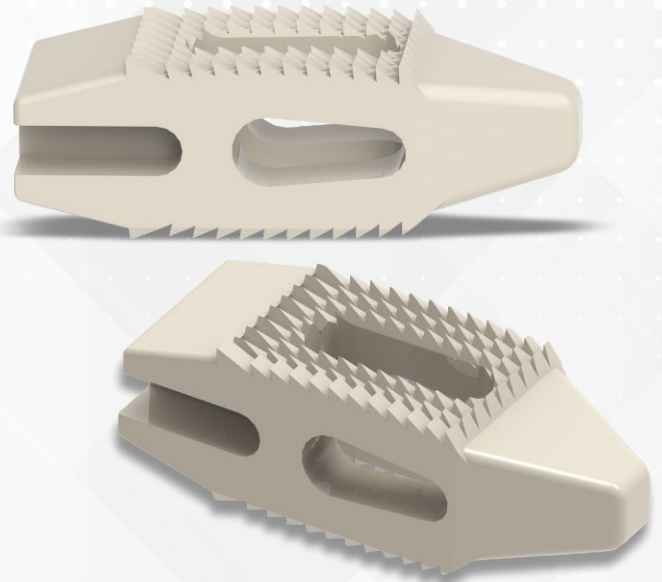
CORE[®] II PLIFC Cage (Endo)

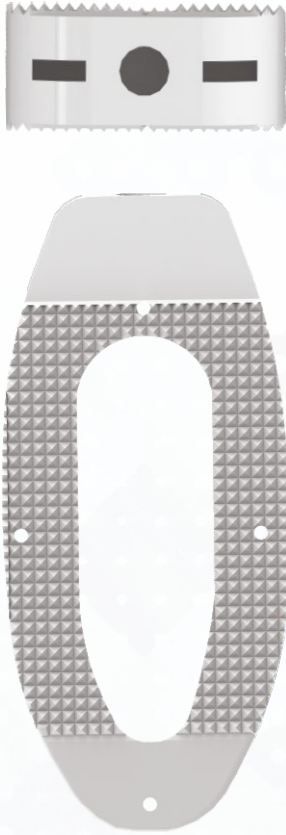


DIA. / LENGTH	CAT. NO. TITANIUM
9.0 MM X 30.0 MM	SO20.TIT.14172
9.0 MM X 35.0 MM	SO20.TIT.14173
10.0 MM X 30.0 MM	SO20.TIT.14174
10.0 MM X 35.0 MM	SO20.TIT.14175
11.0 MM X 30.0 MM	SO20.TIT.14176
11.0 MM X 35.0 MM	SO20.TIT.14177
12.0 MM X 30.0 MM	SO20.TIT.14178
12.0 MM X 35.0 MM	SO20.TIT.14179

CORE[®] II PLIFC Cage (Oblique) (Peek)

DIA. / LENGTH	CAT. NO. TIT.	CAT. NO. PEEK
7.0 MM X 24.0 MM	SO20.TIT.14551	SO20.P14551
7.0 MM X 28.0 MM	SO20.TIT.14552	SO20.P14552
7.0 MM X 32.0 MM	SO20.TIT.14553	SO20.P14553
8.0 MM X 24.0 MM	SO20.TIT.14554	SO20.P14554
8.0 MM X 28.0 MM	SO20.TIT.14555	SO20.P14555
8.0 MM X 32.0 MM	SO20.TIT.14556	SO20.P14556
9.0 MM X 24.0 MM	SO20.TIT.14557	SO20.P14557
9.0 MM X 28.0 MM	SO20.TIT.14558	SO20.P14558
9.0 MM X 32.0 MM	SO20.TIT.14559	SO20.P14559
10.0 MM X 24.0 MM	SO20.TIT.14560	SO20.P14560
10.0 MM X 28.0 MM	SO20.TIT.14561	SO20.P14561
10.0 MM X 32.0 MM	SO20.TIT.14562	SO20.P14562
11.0 MM X 24.0 MM	SO20.TIT.14563	SO20.P14563
11.0 MM X 28.0 MM	SO20.TIT.14564	SO20.P14564
11.0 MM X 32.0 MM	SO20.TIT.14565	SO20.P14565
12.0 MM X 24.0 MM	SO20.TIT.14566	SO20.P14566
12.0 MM X 28.0 MM	SO20.TIT.14567	SO20.P14567
12.0 MM X 32.0 MM	SO20.TIT.14568	SO20.P14568
13.0 MM X 24.0 MM	SO20.TIT.14569	SO20.P14569
13.0 MM X 28.0 MM	SO20.TIT.14570	SO20.P14570
13.0 MM X 32.0 MM	SO20.TIT.14571	SO20.P14571
14.0 MM X 24.0 MM	SO20.TIT.14572	SO20.P14572
14.0 MM X 28.0 MM	SO20.TIT.14573	SO20.P14573
14.0 MM X 32.0 MM	SO20.TIT.14574	SO20.P14574
15.0 MM X 24.0 MM	SO20.TIT.14575	SO20.P14575
15.0 MM X 28.0 MM	SO20.TIT.14576	SO20.P14576
15.0 MM X 32.0 MM	SO20.TIT.14577	SO20.P14577



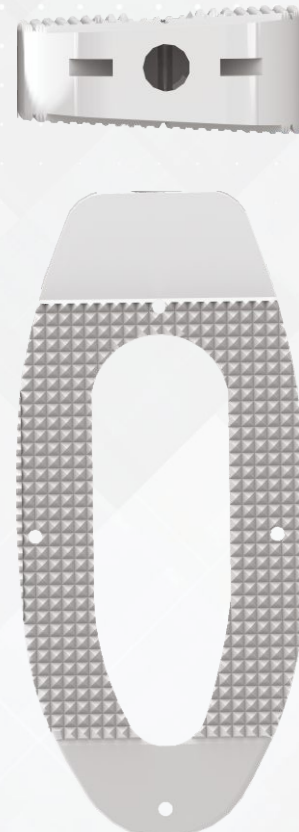


CORE[®] II PLIFC Cage 0° (Transcend) (Peek)

DIA. / LENGTH	CAT. NO. TIT.	CAT. NO. PEEK
9.0 MM X 45.0 MM	SO20.TIT.14578	SO20.P14578
9.0 MM X 50.0 MM	SO20.TIT.14579	SO20.P14579
9.0 MM X 55.0 MM	SO20.TIT.14580	SO20.P14580
10.0 MM X 45.0 MM	SO20.TIT.14581	SO20.P14581
10.0 MM X 50.0 MM	SO20.TIT.14582	SO20.P14582
10.0 MM X 55.0 MM	SO20.TIT.14583	SO20.P14583
11.0 MM X 45.0 MM	SO20.TIT.14584	SO20.P14584
11.0 MM X 50.0 MM	SO20.TIT.14585	SO20.P14585
11.0 MM X 55.0 MM	SO20.TIT.14586	SO20.P14586
12.0 MM X 45.0 MM	SO20.TIT.14587	SO20.P14587
12.0 MM X 50.0 MM	SO20.TIT.14588	SO20.P14588
12.0 MM X 55.0 MM	SO20.TIT.14589	SO20.P14589
13.0 MM X 45.0 MM	SO20.TIT.14590	SO20.P14590
13.0 MM X 50.0 MM	SO20.TIT.14591	SO20.P14591
13.0 MM X 55.0 MM	SO20.TIT.14592	SO20.P14592
14.0 MM X 45.0 MM	SO20.TIT.14593	SO20.P14593
14.0 MM X 50.0 MM	SO20.TIT.14594	SO20.P14594
14.0 MM X 55.0 MM	SO20.TIT.14595	SO20.P14595
15.0 MM X 45.0 MM	SO20.TIT.14596	SO20.P14596
15.0 MM X 50.0 MM	SO20.TIT.14597	SO20.P14597
15.0 MM X 55.0 MM	SO20.TIT.14598	SO20.P14598

CORE[®] II PLIFC Cage 6° (Transcend) (Peek)

DIA. / LENGTH	CAT. NO. TIT.	CAT. NO. PEEK
9.0 MM X 45.0 MM	SO20.TIT.14599	SO20.P14599
9.0 MM X 50.0 MM	SO20.TIT.14600	SO20.P14600
9.0 MM X 55.0 MM	SO20.TIT.14601	SO20.P14601
10.0 MM X 45.0 MM	SO20.TIT.14602	SO20.P14602
10.0 MM X 50.0 MM	SO20.TIT.14603	SO20.P14603
10.0 MM X 55.0 MM	SO20.TIT.14604	SO20.P14604
11.0 MM X 45.0 MM	SO20.TIT.14605	SO20.P14605
11.0 MM X 50.0 MM	SO20.TIT.14606	SO20.P14606
11.0 MM X 55.0 MM	SO20.TIT.14607	SO20.P14607
12.0 MM X 45.0 MM	SO20.TIT.14608	SO20.P14608
12.0 MM X 50.0 MM	SO20.TIT.14609	SO20.P14609
12.0 MM X 55.0 MM	SO20.TIT.14610	SO20.P14610
13.0 MM X 45.0 MM	SO20.TIT.14611	SO20.P14611
13.0 MM X 50.0 MM	SO20.TIT.14612	SO20.P14612
13.0 MM X 55.0 MM	SO20.TIT.14613	SO20.P14613
14.0 MM X 45.0 MM	SO20.TIT.14614	SO20.P14614
14.0 MM X 50.0 MM	SO20.TIT.14615	SO20.P14615
14.0 MM X 55.0 MM	SO20.TIT.14616	SO20.P14616
15.0 MM X 45.0 MM	SO20.TIT.14617	SO20.P14617
15.0 MM X 50.0 MM	SO20.TIT.14618	SO20.P14618
15.0 MM X 55.0 MM	SO20.TIT.14619	SO20.P14619



Occipital Mono Axial Screw

LENGTH	CAT. NO. TITANIUM	
	3.5 MM	4.0 MM
10.0 MM	SP05.TIT07927	SP05.TIT07942
12.0 MM	SP05.TIT07928	SP05.TIT07943
14.0 MM	SP05.TIT07929	SP05.TIT07944
16.0 MM	SP05.TIT07930	SP05.TIT07945
18.0 MM	SP05.TIT07931	SP05.TIT07946
20.0 MM	SP05.TIT07932	SP05.TIT07947
22.0 MM	SP05.TIT07933	SP05.TIT07948
24.0 MM	SP05.TIT07934	SP05.TIT07949
26.0 MM	SP05.TIT07935	SP05.TIT07950
28.0 MM	SP05.TIT07936	SP05.TIT07951
30.0 MM	SP05.TIT07937	SP05.TIT07952
32.0 MM	X	SP05.TIT07953
34.0 MM	X	SP05.TIT07954
36.0 MM	X	SP05.TIT07955
38.0 MM	X	SP05.TIT07956
40.0 MM	X	SP05.TIT07957
42.0 MM	X	SP05.TIT07958
44.0 MM	X	SP05.TIT07959
46.0 MM	X	SP05.TIT07960
48.0 MM	X	SP05.TIT07961
50.0 MM	X	SP05.TIT07962



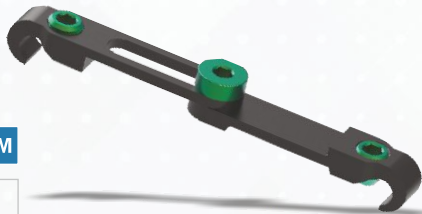
Occipital Poly Axial Screw

LENGTH	CAT. NO. TITANIUM	
	3.5 MM	4.0 MM
10.0 MM	SP05.TIT07971	SP05.TIT07991
12.0 MM	SP05.TIT07972	SP05.TIT07992
14.0 MM	SP05.TIT07973	SP05.TIT07993
16.0 MM	SP05.TIT07974	SP05.TIT07994
18.0 MM	SP05.TIT07975	SP05.TIT07995
20.0 MM	SP05.TIT07976	SP05.TIT07996
22.0 MM	SP05.TIT07977	SP05.TIT07997
24.0 MM	SP05.TIT07978	SP05.TIT07998
26.0 MM	SP05.TIT07979	SP05.TIT07999
28.0 MM	SP05.TIT07980	SP05.TIT08000
30.0 MM	SP05.TIT07981	SP05.TIT08001
32.0 MM	X	SP05.TIT08002
34.0 MM	X	SP05.TIT08003
36.0 MM	X	SP05.TIT08004
38.0 MM	X	SP05.TIT08005
40.0 MM	X	SP05.TIT08006
42.0 MM	X	SP05.TIT08007
44.0 MM	X	SP05.TIT08008
46.0 MM	X	SP05.TIT08009
48.0 MM	X	SP05.TIT08010
50.0 MM	X	SP05.TIT08011



Occipital Auto Pre Stress Transverse Connector 3.5 mm

LENGTH	CAT. NO. TITANIUM
STD.	SP05.TIT08043



Occipital Plate 3.5 mm

LENGTH	CAT. NO. TITANIUM
32.0 MM	SP05.TIT07901
38.0 MM	SP05.TIT07904
44.0 MM	SP05.TIT07903



Occipital Pedicle Connector Hook 3.5 mm

LENGTH	CAT. NO. TITANIUM
STD.	SP05.TIT08042



Occipital Screw

LENGTH	CAT. NO. TITANIUM	
	4.5 MM	5.5 MM
6.0 MM	SP05.TIT07921	SO20.TIT.12245
8.0 MM	SP05.TIT07922	SO20.TIT.12246
10.0 MM	SP05.TIT07923	SO20.TIT.12247
12.0 MM	SP05.TIT07924	SO20.TIT.12248
14.0 MM	SP05.TIT07925	SO20.TIT.12249
16.0 MM	SP05.TIT07926	SO20.TIT.12250
18.0 MM	SP05.TIT07926-1	SO20.TIT.12251



Occipital Laminar Hook 3.5 mm

LENGTH	CAT. NO. TITANIUM	
	LEFT	RIGHT
16.0 MM	SP05.TIT08035	SP05.TIT08040
19.0 MM	SP05.TIT08036	SP05.TIT08041



Occipital Laminar Hook 3.5 mm

LENGTH	CAT. NO. TITANIUM
STD.	SP05.TIT08030



Posterior Occipital Plate with Rod

DIA.	LENGTH	CAT. NO. TITANIUM
3.5 MM	STD.	SP05.TIT07910



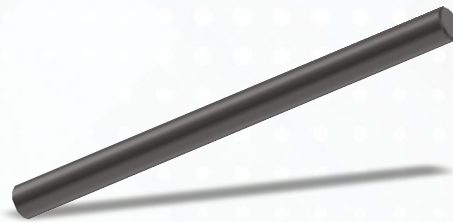
Occipital Connecting Rod 3.5 mm

LENGTH	CAT. NO. TITANIUM
70.0 MM	SP05.TIT08044
140.0 MM	SP05.TIT08045
210.0 MM	SP05.TIT08046



Occipital Transverse Connector Rod 3.5 mm

LENGTH	CAT. NO. TITANIUM
40.0 MM	SP05.TIT08048
45.0 MM	SP05.TIT08049
50.0 MM	SP05.TIT08050
55.0 MM	SP05.TIT08051



Occipital Prebending Rod 3.5 mm

LENGTH	CAT. NO. TITANIUM
130.0 MM	SP05.TIT08047



Occipital Screw 3.5 mm

LENGTH	CAT. NO. TITANIUM
8.0 MM	SP05.TIT07915
10.0 MM	SP05.TIT07916
12.0 MM	SP05.TIT07917
14.0 MM	SP05.TIT07918
16.0 MM	SP05.TIT07919
18.0 MM	SP05.TIT07920



Transverse Connector Hook 3.5 mm

LENGTH	CAT. NO. TITANIUM
STD.	SP05.SS08718



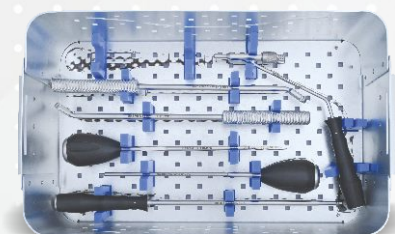
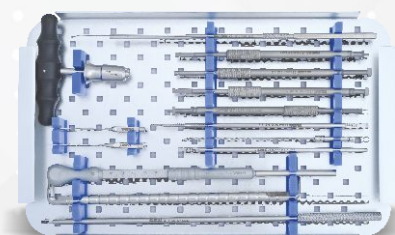
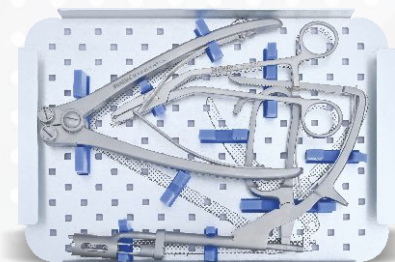
Transverse Connector 3.5 mm

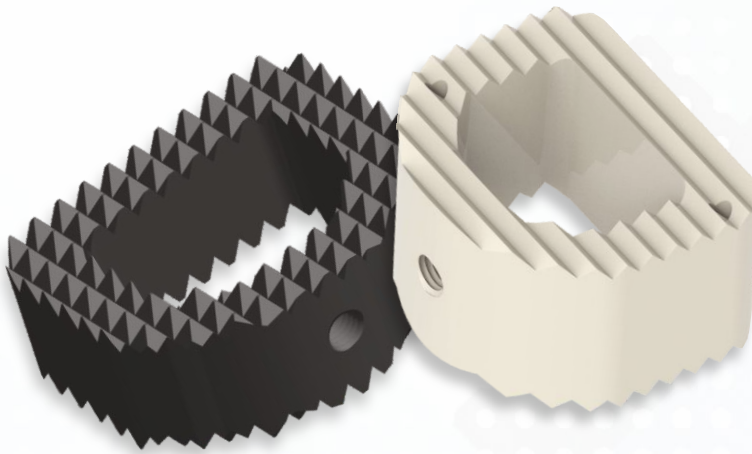
LENGTH	CAT. NO. TITANIUM
STD.	SP05.TIT30042



Instruments Set

SR. NO.	PRODUCT NAME	CAT NO.	QUANTITY
1	OCCIPITAL PLATE HOLDER	SO15.INS.1201	1
2	OCCIPITAL PLATE BENDER	SO15.INS.1202	1
3	DRILL GUIDE WITH FIBER HANDLE	SO15.INS.1203	1
4	SCREW DRIVER WITH FIBER HANDLE 3MM	SO15.INS.1204	1
5	COUNTER TORQUE INNER SCREW INSERTER	SO15.INS.1205	1
6	SCREW DRIVER SHAFT WITH QUICK COUPLING (HEX DRIVE) S=3	SO15.INS.1206	1
7	SCREW DRIVER SHAFT WITH QUICK COUPLING (HEX DRIVE) S=2.5	SO15.INS.1207	1
8	MONO AXIAL SCREW DRIVER WITH QUICK COUPLING	SO15.INS.1208	2
9	POLY AXIAL SCREW DRIVER WITH QUICK COUPLING	SO15.INS.1209	2
10	INNER NUT HOLDER	SO15.INS.1210	1
11	DRILL BIT FOR WITH QUICK COUPLING	SO15.INS.1211	2
12	OCCIPITAL ROD HOLDER	SO15.INS.1212	1
13	OCCIPITAL HOOK HOLDER	SO15.INS.1213	1
14	LAMINAR DETACHER	SO15.INS.1214	1
15	INTERNAL OCCIPITAL ROD BENDER WITH S.S. HANDLE (LEFT)	SO15.INS.1215	1
16	INTERNAL OCCIPITAL ROD BENDER WITH S.S. HANDLE (RIGHT)	SO15.INS.1216	1
17	OCCIPITAL OPEN DRILL WITH BALL HANDLE	SO15.INS.1217	1
18	OCCIPITAL TAP WITH QUICK COUPLING DIA 3.5	SO15.INS.1218	1
19	OCCIPITAL TAP WITH QUICK COUPLING DIA 4.0	SO15.INS.1219	1
20	OCCIPITAL PROBE WITH BALL HANDLE	SO15.INS.1220	1
21	OCCIPITAL PIN SLEEVE	SO15.INS.1221	1
22	OCCIPITAL ROD PUSHER	SO15.INS.1222	1
23	OCCIPITAL ROD PUSHER WITH FIBER HANDLE	SO15.INS.1223	1
24	OCCIPITAL DEPTH GAUGE	SO15.INS.1224	1
25	OCCIPITAL COMPRESSOR	SO15.INS.1225	1
26	OCCIPITAL DISTRACTOR	SO15.INS.1226	1
27	OCCIPITAL ROD BREAKER DIA 3.0MM / 3.5MM	SO15.INS.1227	1
28	OCCIPITAL ROD TEMPLATE 110.0MM	SO15.INS.1228	2
29	OCCIPITAL ROD TEMPLATE 240.0MM	SO15.INS.1229	2
30	OCCIPITAL SOUNDER 1.5MM	SO15.INS.1230	1
31	QUICK COUPLING HANDLE	SO15.INS.1231	2
32	OCCIPITAL PIN I	SO15.INS.1232	3
33	OCCIPITAL PIN II	SO15.INS.1233	3
34	OCCIPITAL HOOK PUSHER	SO15.INS.1234	1
35	OCCIPITAL SCREW HOLDER	SO15.INS.1235	1
36	OCCIPITAL SCREW TAP WITH QUICK COUPLING	SO15.INS.1236	1
37	OCCIPITAL ROD ROTATING FORCEPS	SO15.INS.1237	2
38	CONTAINER FOR CORE [™] OCCIPITAL INSTRUMENT	SO15.INS.OSS	1





Wedge Shaped Cage

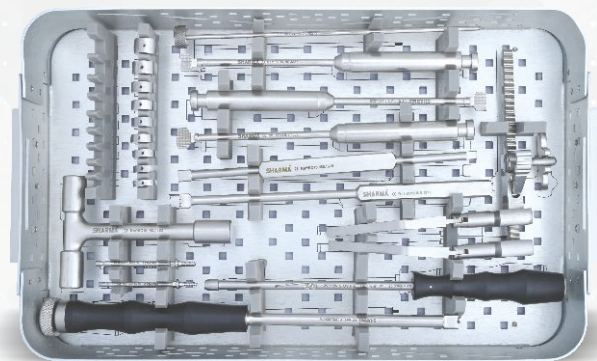
SIZE	HEIGHT	LENGTH	CAT. NO. TITANIUM	CAT. NO. PEEK
4.0 MM	15.0 MM	12.5 MM	SP05.TIT08900	SP05.P08900
4.5 MM	15.0 MM	12.5 MM	SP05.TIT08901	SP05.P08901
5.0 MM	15.0 MM	12.5 MM	SP05.TIT08902	SP05.P08902
5.5 MM	15.0 MM	12.5 MM	SP05.TIT08903	SP05.P08903
6.0 MM	15.0 MM	12.5 MM	SP05.TIT08904	SP05.P08904
6.5 MM	15.0 MM	12.5 MM	SP05.TIT08905	SP05.P08905
7.0 MM	15.0 MM	12.5 MM	SP05.TIT08906	SP05.P08906
8.5 MM	15.0 MM	12.5 MM	SP05.TIT08907	SP05.P08907
10.0 MM	15.0 MM	12.5 MM	SP05.TIT08908	SP05.P08908

Features

- "Wedge integration" and "arc fusion" (hereinafter collectively referred to both : anterior CAGE) is applied to the cervical spine Anterior interbody fusion implant system
- The system is fully simulate the anatomy of the vertebral end plates are designed to ensure the stability of disc height.
- A large contact area on the lower greatly reduces the incidence of subsidence.
- The design of many holes and big holes on the following design to promote the integration of CAGE and bone tissue.
- The projection on the lower teeth of the shift can be reduced after implantation.
- Two shapes to choose from a total of 18 kinds of specifications to ensure the smooth progress of various surgical cases.
- Using high-strength titanium alloy, having a MRI / CT compatibility.

Instruments Set

SR. NO.	PRODUCT NAME	CAT NO.	QUANTITY
1	CAGE HOLDER I	SO15.INS.1375	1
2	CAGE HOLDER II	SO15.INS.1376	1
3	CAGE IMPACTOR WITH FIBER HANDLE	SO15.INS.1377	1
4	CERVICAL COMPACTOR BOX	SO15.INS.1378	1
5	TRIAL 4.0MM	SO15.INS.1379	1
6	TRIAL 4.5MM	SO15.INS.1380	1
7	TRIAL 5.0MM	SO15.INS.1381	1
8	TRIAL 5.5MM	SO15.INS.1382	1
9	TRIAL 6.0MM	SO15.INS.1383	1
10	TRIAL 6.5MM	SO15.INS.1384	1
11	TRIAL 7.0MM	SO15.INS.1385	1
12	TRIAL 8.5MM	SO15.INS.1386	1
13	TRIAL 10.0MM	SO15.INS.1387	1
14	RASP 4.0MM	SO15.INS.1388	1
15	RASP 4.5MM	SO15.INS.1389	1
16	RASP 5.0MM	SO15.INS.1390	1
17	RASP 5.5MM	SO15.INS.1391	1
18	RASP 6.0MM	SO15.INS.1392	1
19	RASP 6.5MM	SO15.INS.1393	1
20	RASP 7.0MM	SO15.INS.1394	1
21	RASP 8.5MM	SO15.INS.1395	1
22	RASP 10.0MM	SO15.INS.1396	1
23	CERVICAL DISTRACTOR DEVICE	SO15.INS.1397	1
24	HANDLE FOR DISTRACTOR THREADED PIN	SO15.INS.1398	1
25	DISTRACTOR THREADED PIN	SO15.INS.1399	1
26	RING CURETTE WITH FIBER HANDLE 2.0MM (STRAIGHT)	SO15.INS.1400	1
27	RING CURETTE WITH FIBER HANDLE 3.0MM (STRAIGHT)	SO15.INS.1401	1
28	STRIPPING DEVICE WITH FIBER HANDLE	SO15.INS.1402	1
29	CURETTER WITH FIBER HANDLE 3.0MM (STRAIGHT)	SO15.INS.1403	1
30	CURETTER WITH FIBER HANDLE 6.0MM (STRAIGHT)	SO15.INS.1404	1
31	CONTAINER FOR CORE™ (WSFC) WEDGE SPREAD FUSION CAGE INSTRUMENT	SO15.INS.WSIFC	1





ACF Plate

LENGTH	CAT. NO. TITANIUM
5.0 MM	SP05.TIT10126
6.0 MM	SP05.TIT10127
7.0 MM	SP05.TIT10128
8.0 MM	SP05.TIT10129
9.0 MM	SP05.TIT10130
10.0 MM	SP05.TIT10131
11.0 MM	SP05.TIT10132
12.0 MM	SP05.TIT10133

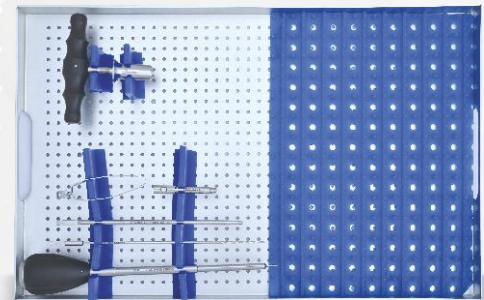


ACF Screw

LENGTH	CAT. NO. TITANIUM
10.0 MM	SP05.TIT10145
12.0 MM	SP05.TIT10146
14.0 MM	SP05.TIT10147
16.0 MM	SP05.TIT10148
18.0 MM	SP05.TIT10149
20.0 MM	SP05.TIT10150
22.0 MM	SP05.TIT10151
24.0 MM	SP05.TIT10152

Instruments Set

SR. NO.	PRODUCT NAME	CAT NO.	QUANTITY
1	ENTRY AWL 2.0 MM	SO16.INS.1412	1
2	RASP 5.0 MM	SO16.INS.1413	1
3	RASP 6.0 MM	SO16.INS.1414	1
4	RASP 7.0 MM	SO16.INS.1415	1
5	RASP 8.0 MM	SO16.INS.1416	1
6	RASP 9.0 MM	SO16.INS.1417	1
7	RASP 10.0 MM	SO16.INS.1418	1
8	RASP 11.0 MM	SO16.INS.1419	1
9	RASP 12.0 MM	SO16.INS.1420	1
11	IMPACTOR 5.0 MM	SO16.INS.1421	1
12	IMPACTOR 6.0 MM	SO16.INS.1422	1
13	IMPACTOR 7.0 MM	SO16.INS.1423	1
14	IMPACTOR 8.0 MM	SO16.INS.1424	1
15	IMPACTOR 9.0 MM	SO16.INS.1425	1
16	IMPACTOR 10.0 MM	SO16.INS.1426	1
17	IMPACTOR 11.0 MM	SO16.INS.1427	1
18	IMPACTOR 12.0 MM	SO16.INS.1428	1
20	ACF PLATE HOLDER	SO16.INS.1429	1
21	LOCKING DRILL SLEEVE 3.5 MM	SO16.INS.1430	2
22	DRILL BIT 2.5 MM WITH QUICK COUPLING	SO16.INS.1431	2
23	SCREW DRIVER 2.5 MM WITH FIBER HANDLE	SO16.INS.1432	2
24	GRAPHIC CASE FOR CORE™ ACF PLATE INSTRUMENT SET	SO15.INS.ACFP	1





Cervical Plate

LENGTH	CAT. NO. TITANIUM
20.0 MM	SP05.TIT07831
22.5 MM	SP05.TIT07832
25.0 MM	SP05.TIT07833
27.5 MM	SP05.TIT07834
30.0 MM	SP05.TIT07835
32.5 MM	SP05.TIT07836
35.0 MM	SP05.TIT07837
37.5 MM	SP05.TIT07838
40.0 MM	SP05.TIT07839
42.5 MM	SP05.TIT07840
45.0 MM	SP05.TIT07841
47.5 MM	SP05.TIT07842
50.0 MM	SP05.TIT07843
52.5 MM	SP05.TIT07844
55.0 MM	SP05.TIT07845
57.5 MM	SP05.TIT07846
60.0 MM	SP05.TIT07847
62.5 MM	SP05.TIT07848
65.0 MM	SP05.TIT07849
67.5 MM	SP05.TIT07850
70.0 MM	SP05.TIT07851
72.5 MM	SP05.TIT07852
75.0 MM	SP05.TIT07853
77.5 MM	SP05.TIT07854
80.0 MM	SP05.TIT07855
82.5 MM	SP05.TIT07856
85.0 MM	SP05.TIT07857
87.5 MM	SP05.TIT07858
90.0 MM	SP05.TIT07859
95.0 MM	SP05.TIT07860
100.0 MM	SP05.TIT07861
105.0 MM	SP05.TIT07862
110.0 MM	SP05.TIT07863

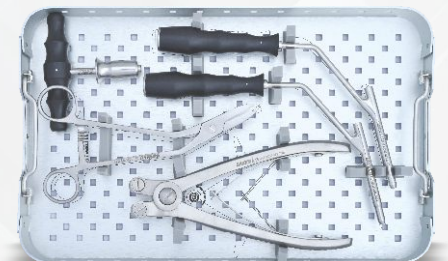
Cervical Screw



LENGTH	CAT. NO. TIT.	
	4.0 MM	4.3 MM
8.0 MM	SP05.TIT07875	SP05.TIT07890
10.0 MM	SP05.TIT07876	SP05.TIT07891
12.0 MM	SP05.TIT07877	SP05.TIT07892
14.0 MM	SP05.TIT07878	SP05.TIT07893
16.0 MM	SP05.TIT07879	SP05.TIT07894
18.0 MM	SP05.TIT07880	SP05.TIT07895
20.0 MM	SP05.TIT07881	SP05.TIT07896

Instruments Set

SR. NO.	PRODUCT NAME	CAT NO.	QUANTITY
1	GUIDE DIA 2.6	SO15.INS.1251	1
2	SCREW DRIVER WITH FIBER HANDLE (HEX HEAD)S=2.5	SO15.INS.1252	2
3	CERVICAL PLATE SCREW DRIVER	SO15.INS.1253	2
4	QUICK CONNECTOR HANDLE	SO15.INS.1254	1
5	PLATE HOLDING CLAMP	SO15.INS.1255	1
6	DRILL BIT WITH QUICK COUPLING DIA 2.4	SO15.INS.1256	2
7	SLEEVE FOR DISTRACTOR THREADED PIN	SO15.INS.1257	1
8	CERVICAL DISTRACTOR	SO15.INS.1258	1
9	PLATE BENDER 2MM	SO15.INS.1259	1
10	TEMPORARY FIXATION PIN HOLDER	SO15.INS.1260	1
11	TEMPORARY FIXATION PIN DIA 1.5	SO15.INS.1261	6
12	HANDLE FOR DISTRACTOR THREADED PIN	SO15.INS.1262	1
13	DISTRACTOR THREADED PIN	SO15.INS.1263	2
14	PIN INSERTER	SO15.INS.4660	1
15	SELF - HOLDING SCREW DRIVER WITH FIBER HANDLE	SO15.INS.4665	1
16	PLATE BENDER	SO15.INS.4670	1
17	EXTRACTOR	SO15.INS.4675	1
18	AWL	SO15.INS.4680	1
19	CALIPER	SO15.INS.4685	1
20	CONTAINER	SO15.INS.1264	1
21	CONTAINER FOR CORE™ CERVICAL PLATE INSTRUMENT	SO15.INS.CPIS	1



Cervical Plate (Variable - Angle)

4 Holes Plate

LENGTH	CAT. NO. TITANIUM
23.0 MM	SP05.TIT30002
25.0 MM	SP05.TIT30003
27.0 MM	SP05.TIT30004
29.0 MM	SP05.TIT30005
31.0 MM	SP05.TIT30006
33.0 MM	SP05.TIT30007
35.0 MM	SP05.TIT30008



6 Holes Plate

LENGTH	CAT. NO. TITANIUM
37.0 MM	SP05.TIT30009
39.0 MM	SP05.TIT30010
41.0 MM	SP05.TIT30011
43.0 MM	SP05.TIT30012
45.0 MM	SP05.TIT30013
47.0 MM	SP05.TIT30014
49.0 MM	SP05.TIT30015
51.0 MM	SP05.TIT30016
53.0 MM	SP05.TIT30017
55.0 MM	SP05.TIT30018



8 Holes Plate

LENGTH	CAT. NO. TITANIUM
54.0 MM	SP05.TIT30019
57.0 MM	SP05.TIT30020
60.0 MM	SP05.TIT30021
63.0 MM	SP05.TIT30022
66.0 MM	SP05.TIT30023
69.0 MM	SP05.TIT30024
72.0 MM	SP05.TIT30025
75.0 MM	SP05.TIT30026
78.0 MM	SP05.TIT30027

Features

- Thinness, 2.0mm
- Pre-bending based on physiological curvature
- Large enough bone graft viewing window
- Easy to lock, one-step locking of pre-installed locking piece
- Various screw options (variable angle, fixed angle)

Introduction

- A variety of specifications
- Low profile
- One-step locking screw
- Fixed and variable angle screw selection
- Limit, semi-limited, multiple fixed options
- Openings in the plate allow observation of the graft



Variable - angle screw

Fixed - angle screw



Variable & Fixed Angle Screw

LENGTH	CAT. NO. TITANIUM	
	Ø 4.0 MM	Ø 4.5 MM
11.0 MM	SP05.TIT30028	SP05.TIT30035
12.0 MM	SP05.TIT30029	SP05.TIT30036
13.0 MM	SP05.TIT30030	SP05.TIT30037
14.0 MM	SP05.TIT30031	SP05.TIT30038
15.0 MM	SP05.TIT30032	SP05.TIT30039
16.0 MM	SP05.TIT30033	SP05.TIT30040
17.0 MM	SP05.TIT30034	SP05.TIT30041



Mono Axial - Pedicle Screw

LENGTH	CAT. NO. TITANIUM							
	4.0 MM	4.5 MM	5.0 MM	5.5 MM	6.0 MM	6.5 MM	7.0 MM	7.5 MM
20.0 MM	SP05.TIT09724	SP05.TIT09737	SP05.TIT09750	SP05.TIT09763	SP05.TIT09775	SP05.TIT09789	SP05.TIT09802	SP05.TIT09814
25.0 MM	SP05.TIT08055	SP05.TIT08070	SP05.TIT08085	SP05.TIT08100	SP05.TIT09776	SP05.TIT09790	SP05.TIT09803	SP05.TIT09815
30.0 MM	SP05.TIT08056	SP05.TIT08071	SP05.TIT08086	SP05.TIT08101	SP05.TIT08120	SP05.TIT08135	SP05.TIT08150	SP05.TIT08165
35.0 MM	SP05.TIT08057	SP05.TIT08072	SP05.TIT08087	SP05.TIT08102	SP05.TIT08121	SP05.TIT08136	SP05.TIT08151	SP05.TIT08166
40.0 MM	SP05.TIT08058	SP05.TIT08073	SP05.TIT08088	SP05.TIT08103	SP05.TIT08122	SP05.TIT08137	SP05.TIT08152	SP05.TIT08167
45.0 MM	SP05.TIT08059	SP05.TIT08074	SP05.TIT08089	SP05.TIT08104	SP05.TIT08123	SP05.TIT08138	SP05.TIT08153	SP05.TIT08168
50.0 MM	SP05.TIT08060	SP05.TIT08075	SP05.TIT08090	SP05.TIT08105	SP05.TIT08124	SP05.TIT08139	SP05.TIT08154	SP05.TIT08169
55.0 MM	SP05.TIT09725	SP05.TIT09738	SP05.TIT09751	SP05.TIT08106	SP05.TIT09777	SP05.TIT08140	SP05.TIT08155	SP05.TIT08170
60.0 MM	SP05.TIT09726	SP05.TIT09739	SP05.TIT09752	SP05.TIT09764	SP05.TIT09778	SP05.TIT09791	SP05.TIT08156	SP05.TIT08171

Poly Axial - Pedicle Screw

LENGTH	CAT. NO. TITANIUM							
	4.0 MM	4.5 MM	5.0 MM	5.5 MM	6.0 MM	6.5 MM	7.0 MM	7.5 MM
20.0 MM	SP05.TIT08181	SP05.TIT08195	SP05.TIT09842	SP05.TIT09855	SP05.TIT09867	SP05.TIT09873	SP05.TIT09879	SP05.TIT09885
25.0 MM	SP05.TIT08182	SP05.TIT08196	SP05.TIT08210	SP05.TIT08225	SP05.TIT08241	SP05.TIT08261	SP05.TIT08281	SP05.TIT08291
30.0 MM	SP05.TIT08183	SP05.TIT08197	SP05.TIT08211	SP05.TIT08226	SP05.TIT08242	SP05.TIT08262	SP05.TIT08282	SP05.TIT08292
35.0 MM	SP05.TIT08184	SP05.TIT08198	SP05.TIT08212	SP05.TIT08227	SP05.TIT08243	SP05.TIT08263	SP05.TIT08283	SP05.TIT08293
40.0 MM	SP05.TIT08185	SP05.TIT08199	SP05.TIT08213	SP05.TIT08228	SP05.TIT08244	SP05.TIT08264	SP05.TIT08284	SP05.TIT08294
45.0 MM	SP05.TIT08186	SP05.TIT08200	SP05.TIT08214	SP05.TIT08229	SP05.TIT08245	SP05.TIT08265	SP05.TIT08285	SP05.TIT08295
50.0 MM	SP05.TIT09816	SP05.TIT09829	SP05.TIT08215	SP05.TIT08230	SP05.TIT08246	SP05.TIT08266	SP05.TIT08286	SP05.TIT08296
55.0 MM	SP05.TIT09817	SP05.TIT09830	SP05.TIT09843	SP05.TIT08231	SP05.TIT08247	SP05.TIT08267	SP05.TIT08287	SP05.TIT08297
60.0 MM	SP05.TIT09818	SP05.TIT09831	SP05.TIT09844	SP05.TIT09856	SP05.TIT08248	SP05.TIT08268	SP05.TIT08288	SP05.TIT08298



Mono Spondylolisthesis - Reduction Screw

LENGTH	CAT. NO. TITANIUM							
	4.0 MM	4.5 MM	5.0 MM	5.5 MM	6.0 MM	6.5 MM	7.0 MM	7.5 MM
20.0 MM	SP05.TIT09896	SP05.TIT09904	SP05.TIT09912	SP05.TIT09920	SP05.TIT09926	SP05.TIT09935	SP05.TIT09943	SP05.TIT09950
25.0 MM	SP05.TIT08310	SP05.TIT08325	SP05.TIT08340	SP05.TIT08355	SP05.TIT09927	SP05.TIT09936	SP05.TIT09944	SP05.TIT09951
30.0 MM	SP05.TIT08311	SP05.TIT08326	SP05.TIT08341	SP05.TIT08356	SP05.TIT08371	SP05.TIT08385	SP05.TIT08400	SP05.TIT08415
35.0 MM	SP05.TIT08312	SP05.TIT08327	SP05.TIT08342	SP05.TIT08357	SP05.TIT08372	SP05.TIT08386	SP05.TIT08401	SP05.TIT08416
40.0 MM	SP05.TIT08313	SP05.TIT08328	SP05.TIT08343	SP05.TIT08358	SP05.TIT08373	SP05.TIT08387	SP05.TIT08402	SP05.TIT08417
45.0 MM	SP05.TIT08314	SP05.TIT08329	SP05.TIT08344	SP05.TIT08359	SP05.TIT08374	SP05.TIT08388	SP05.TIT08403	SP05.TIT08418
50.0 MM	SP05.TIT08315	SP05.TIT08330	SP05.TIT08345	SP05.TIT08360	SP05.TIT08375	SP05.TIT08389	SP05.TIT08404	SP05.TIT08419
55.0 MM	SP05.TIT09897	SP05.TIT09905	SP05.TIT09913	SP05.TIT08361	SP05.TIT09928	SP05.TIT08390	SP05.TIT08405	SP05.TIT08420
60.0 MM	SP05.TIT09898	SP05.TIT09906	SP05.TIT09914	SP05.TIT09921	SP05.TIT09929	SP05.TIT09937	SP05.TIT08406	SP05.TIT08421



Poly Spondylolisthesis - Reduction Screw

LENGTH	CAT. NO. TITANIUM							
	4.0 MM	4.5 MM	5.0 MM	5.5 MM	6.0 MM	6.5 MM	7.0 MM	7.5 MM
20.0 MM	SP05.TIT08431	SP05.TIT08446	SP05.TIT09972	SP05.TIT09980	SP05.TIT09987	SP05.TIT09993	SP05.TIT09999	SP05.TIT10005
25.0 MM	SP05.TIT08432	SP05.TIT08447	SP05.TIT08461	SP05.TIT08476	SP05.TIT08492	SP05.TIT08510	SP05.TIT08527	SP05.TIT08544
30.0 MM	SP05.TIT08433	SP05.TIT08448	SP05.TIT08462	SP05.TIT08477	SP05.TIT08493	SP05.TIT08511	SP05.TIT08528	SP05.TIT08545
35.0 MM	SP05.TIT08434	SP05.TIT08449	SP05.TIT08463	SP05.TIT08478	SP05.TIT08494	SP05.TIT08512	SP05.TIT08529	SP05.TIT08546
40.0 MM	SP05.TIT08435	SP05.TIT08450	SP05.TIT08464	SP05.TIT08479	SP05.TIT08495	SP05.TIT08513	SP05.TIT08530	SP05.TIT08547
45.0 MM	SP05.TIT08436	SP05.TIT08451	SP05.TIT08465	SP05.TIT08480	SP05.TIT08496	SP05.TIT08514	SP05.TIT08531	SP05.TIT08548
50.0 MM	SP05.TIT09956	SP05.TIT09964	SP05.TIT08466	SP05.TIT08481	SP05.TIT08497	SP05.TIT08515	SP05.TIT08532	SP05.TIT08549
55.0 MM	SP05.TIT09957	SP05.TIT09965	SP05.TIT09973	SP05.TIT08482	SP05.TIT08498	SP05.TIT08516	SP05.TIT08533	SP05.TIT08550
60.0 MM	SP05.TIT09958	SP05.TIT09966	SP05.TIT09974	SP05.TIT09981	SP05.TIT08499	SP05.TIT08517	SP05.TIT08534	SP05.TIT08551

Pedicle Screw - Mono Axial [Double Threaded]

LENGTH	CAT. NO. TITANIUM							
	4.0 MM	4.5 MM	5.0 MM	5.5 MM	6.0 MM	6.5 MM	7.0 MM	7.5 MM
20.0 MM	SP05.TIT10011	SP05.TIT10016	SP05.TIT10022	SP05.TIT10028	SP05.TIT10034	SP05.TIT10040	SP05.TIT10046	SP05.TIT10052
25.0 MM	SP05.TIT09365	SP05.TIT09383	SP05.TIT09401	SP05.TIT09419	SP05.TIT09437	SP05.TIT09455	SP05.TIT09473	SP05.TIT09491
30.0 MM	SP05.TIT09366	SP05.TIT09384	SP05.TIT09402	SP05.TIT09420	SP05.TIT09438	SP05.TIT09456	SP05.TIT09474	SP05.TIT09492
35.0 MM	SP05.TIT09367	SP05.TIT09385	SP05.TIT09403	SP05.TIT09421	SP05.TIT09439	SP05.TIT09457	SP05.TIT09475	SP05.TIT09493
40.0 MM	SP05.TIT09368	SP05.TIT09386	SP05.TIT09404	SP05.TIT09422	SP05.TIT09440	SP05.TIT09458	SP05.TIT09476	SP05.TIT09494
45.0 MM	SP05.TIT09369	SP05.TIT09387	SP05.TIT09405	SP05.TIT09423	SP05.TIT09441	SP05.TIT09459	SP05.TIT09477	SP05.TIT09495
50.0 MM	SP05.TIT09370	SP05.TIT09388	SP05.TIT09406	SP05.TIT09424	SP05.TIT09442	SP05.TIT09460	SP05.TIT09478	SP05.TIT09496
55.0 MM	SP05.TIT09371	SP05.TIT09389	SP05.TIT09407	SP05.TIT09425	SP05.TIT09443	SP05.TIT09461	SP05.TIT09479	SP05.TIT09497
60.0 MM	SP05.TIT09372	SP05.TIT09390	SP05.TIT09408	SP05.TIT09426	SP05.TIT09444	SP05.TIT09462	SP05.TIT09480	SP05.TIT09498



Pedicle Screw - Poly Axial [Double Threaded]

LENGTH	CAT. NO. TITANIUM							
	4.0 MM	4.5 MM	5.0 MM	5.5 MM	6.0 MM	6.5 MM	7.0 MM	7.5 MM
20.0 MM	SP05.TIT10058	SP05.TIT10064	SP05.TIT10070	SP05.TIT10076	SP05.TIT10082	SP05.TIT10088	SP05.TIT10094	SP05.TIT10100
25.0 MM	SP05.TIT09509	SP05.TIT09527	SP05.TIT09545	SP05.TIT09563	SP05.TIT09581	SP05.TIT09599	SP05.TIT09617	SP05.TIT09635
30.0 MM	SP05.TIT09510	SP05.TIT09528	SP05.TIT09546	SP05.TIT09564	SP05.TIT09582	SP05.TIT09600	SP05.TIT09618	SP05.TIT09636
35.0 MM	SP05.TIT09511	SP05.TIT09529	SP05.TIT09547	SP05.TIT09565	SP05.TIT09583	SP05.TIT09601	SP05.TIT09619	SP05.TIT09637
40.0 MM	SP05.TIT09512	SP05.TIT09530	SP05.TIT09548	SP05.TIT09566	SP05.TIT09584	SP05.TIT09602	SP05.TIT09620	SP05.TIT09638
45.0 MM	SP05.TIT09513	SP05.TIT09531	SP05.TIT09549	SP05.TIT09567	SP05.TIT09585	SP05.TIT09603	SP05.TIT09621	SP05.TIT09639
50.0 MM	SP05.TIT09514	SP05.TIT09532	SP05.TIT09550	SP05.TIT09568	SP05.TIT09586	SP05.TIT09604	SP05.TIT09622	SP05.TIT09640
55.0 MM	SP05.TIT09515	SP05.TIT09533	SP05.TIT09551	SP05.TIT09569	SP05.TIT09587	SP05.TIT09605	SP05.TIT09623	SP05.TIT09641
60.0 MM	SP05.TIT09516	SP05.TIT09534	SP05.TIT09552	SP05.TIT09570	SP05.TIT09588	SP05.TIT09606	SP05.TIT09624	SP05.TIT09642

**Transverse Connecting
Rod 3.0mm (Round)**



LENGTH	CAT. NO. TITANIUM
50.0 MM	SP05.TIT08600
55.0 MM	SP05.TIT08601
60.0 MM	SP05.TIT08602
65.0 MM	SP05.TIT08603
70.0 MM	SP05.TIT08604
75.0 MM	SP05.TIT08605
80.0 MM	SP05.TIT08606
85.0 MM	SP05.TIT08607
90.0 MM	SP05.TIT08608

**Transverse Connecting
Rod 4.0mm (Flat)**



LENGTH	CAT. NO. TITANIUM
40.0 MM	SP05.TIT08580
45.0 MM	SP05.TIT08581
50.0 MM	SP05.TIT08582
55.0 MM	SP05.TIT08583
60.0 MM	SP05.TIT08584
65.0 MM	SP05.TIT08585
70.0 MM	SP05.TIT08586
75.0 MM	SP05.TIT08587
80.0 MM	SP05.TIT08588



Connecting Rod 5.5mm (Round Head)

LENGTH	CAT. NO. TITANIUM (ROUND HEAD)	LENGTH	CAT. NO. TITANIUM (ROUND HEAD)
40.0 MM	SP05.TIT09668	280.0 MM	SP05.TIT08638
50.0 MM	SP05.TIT08615	290.0 MM	SP05.TIT08639
60.0 MM	SP05.TIT08616	300.0 MM	SP05.TIT08640
70.0 MM	SP05.TIT08617	310.0 MM	SP05.TIT08641
80.0 MM	SP05.TIT08618	320.0 MM	SP05.TIT08642
90.0 MM	SP05.TIT08619	330.0 MM	SP05.TIT08643
100.0 MM	SP05.TIT08620	340.0 MM	SP05.TIT08644
110.0 MM	SP05.TIT08621	350.0 MM	SP05.TIT08645
120.0 MM	SP05.TIT08622	360.0 MM	SP05.TIT08646
130.0 MM	SP05.TIT08623	370.0 MM	SP05.TIT08647
140.0 MM	SP05.TIT08624	380.0 MM	SP05.TIT08648
150.0 MM	SP05.TIT08625	390.0 MM	SP05.TIT08649
160.0 MM	SP05.TIT08626	400.0 MM	SP05.TIT08650
170.0 MM	SP05.TIT08627	410.0 MM	SP05.TIT08651
180.0 MM	SP05.TIT08628	420.0 MM	SP05.TIT08652
190.0 MM	SP05.TIT08629	430.0 MM	SP05.TIT08653
200.0 MM	SP05.TIT08630	440.0 MM	SP05.TIT08654
210.0 MM	SP05.TIT08631	450.0 MM	SP05.TIT08655
220.0 MM	SP05.TIT08632	460.0 MM	SP05.TIT08656
230.0 MM	SP05.TIT08633	470.0 MM	SP05.TIT08657
240.0 MM	SP05.TIT08634	480.0 MM	SP05.TIT08658
250.0 MM	SP05.TIT08635	490.0 MM	SP05.TIT08659
260.0 MM	SP05.TIT08636	500.0 MM	SP05.TIT08660
270.0 MM	SP05.TIT08637		



Connecting Rod 5.5mm (Hex Head)

LENGTH	CAT. NO. TITANIUM (HEX HEAD)	LENGTH	CAT. NO. TITANIUM (HEX HEAD)
50.0 MM	SP05.TIT08670	280.0 MM	SP05.TIT08693
60.0 MM	SP05.TIT08671	290.0 MM	SP05.TIT08694
70.0 MM	SP05.TIT08672	300.0 MM	SP05.TIT08695
80.0 MM	SP05.TIT08673	310.0 MM	SP05.TIT08696
90.0 MM	SP05.TIT08674	320.0 MM	SP05.TIT08697
100.0 MM	SP05.TIT08675	330.0 MM	SP05.TIT08698
110.0 MM	SP05.TIT08676	340.0 MM	SP05.TIT08699
120.0 MM	SP05.TIT08677	350.0 MM	SP05.TIT08700
130.0 MM	SP05.TIT08678	360.0 MM	SP05.TIT08701
140.0 MM	SP05.TIT08679	370.0 MM	SP05.TIT08702
150.0 MM	SP05.TIT08680	380.0 MM	SP05.TIT08703
160.0 MM	SP05.TIT08681	390.0 MM	SP05.TIT08704
170.0 MM	SP05.TIT08682	400.0 MM	SP05.TIT08705
180.0 MM	SP05.TIT08683	410.0 MM	SP05.TIT08706
190.0 MM	SP05.TIT08684	420.0 MM	SP05.TIT08707
200.0 MM	SP05.TIT08685	430.0 MM	SP05.TIT08708
210.0 MM	SP05.TIT08686	440.0 MM	SP05.TIT08709
220.0 MM	SP05.TIT08687	450.0 MM	SP05.TIT08710
230.0 MM	SP05.TIT08688	460.0 MM	SP05.TIT08711
240.0 MM	SP05.TIT08689	470.0 MM	SP05.TIT08712
250.0 MM	SP05.TIT08690	480.0 MM	SP05.TIT08713
260.0 MM	SP05.TIT08691	490.0 MM	SP05.TIT08714
270.0 MM	SP05.TIT08692	500.0 MM	SP05.TIT08715

Transverse Connector 5.5 mm

LENGTH	CAT. NO. TITANIUM
STD.	SP05.TIT08720



Transverse Connector Hook 5.5 mm

LENGTH	CAT. NO. TITANIUM
STD.	SP05.TIT08722



Auto Pre Stress Transverse Connector 5.5 mm

LENGTH	CAT. NO. TITANIUM
28.0 MM	SP05.TIT08725
33.0 MM	SP05.TIT08726
43.0 MM	SP05.TIT08727
50 TO 65 MM	SP05.TIT08730



Laminar Hook 5.5 mm

LENGTH	CAT. NO. TITANIUM
6.5 MM	SP05.TIT08561
7.0 MM	SP05.TIT08562
8.0 MM	SP05.TIT08563



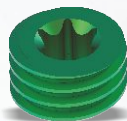
Pedicle Hook 5.5 mm

LENGTH	CAT. NO. TITANIUM
6.5 MM	SP05.TIT08570
7.0 MM	SP05.TIT08571
8.0 MM	SP05.TIT08572



Inner Nut

LENGTH	CAT. NO. TITANIUM
STD.	SP05.TIT08577



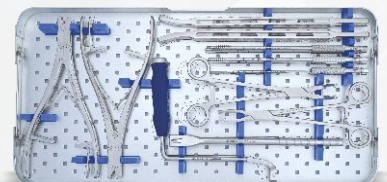
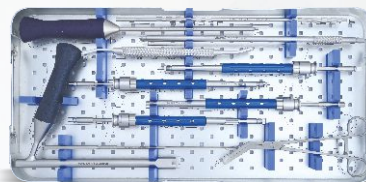
Staple

LENGTH	CAT. NO. TITANIUM
4.5 MM	SP05.TIT08875
5.5 MM	SP05.TIT08876
6.5 MM	SP05.TIT08877



Instruments Set

SR. NO.	PRODUCT NAME	CAT NO.	QUANTITY
1	HOLDING WRENCH PLUM (INNER NUT HOLDER)	SO15.INS.0451	1
2	TENACULUM FORCEPS (FOR TRANSVERSE CONNECTOR)	SO15.INS.0452	1
3	ROD HOLDER PREBENT (FOR FLAT ROD)	SO15.INS.0453	1
4	ROD BENDER FORCEPS	SO15.INS.0454	1
5	ROD TEMPLATE 120CM FOR 5.0 MM ROD	SO15.INS.0455	1
	ROD TEMPLATE 200CM FOR 5.0 MM ROD	SO15.INS.0456	1
	ROD TEMPLATE 300 CM FOR 5.0 MM ROD	SO15.INS.0457	1
6	DEVELOPING NEEDLE BOX	SO15.INS.0459	1
	DEVELOPING NEEDLE BOX WITH NEEDLE ROUND	SO15.INS.0459-R	4
	DEVELOPING NEEDLE BOX WITH NEEDLE PILLAR	SO15.INS.0459-P	4
7	ROD PUSHER CLAMP PREBENT (FOR CONNECTOR)	SO15.INS.0460	1
8	INTERNAL ROD BENDER LEFT	SO15.INS.0461	1
9	INTERNAL ROD BENDER RIGHT	SO15.INS.0462	1
10	ROD ROTATION HEX WRENCH	SO15.INS.0463	2
11	BEALE ROD REDUCER	SO15.INS.0464	1
	EXTENDER 7.0 MM	SO15.INS.0464-1	1
	EXTENDER 14.0 MM	SO15.INS.0464-2	1
12	PEDICLE DISTRACTOR	SO15.INS.0465	1
13	TAP FOR 4.0 MM WITH QUICK COUPLING	SO15.INS.0466	1
14	TAP FOR 4.5 MM WITH QUICK COUPLING	SO15.INS.0467	1
15	TAP FOR 5.5 MM WITH QUICK COUPLING	SO15.INS.0468	1
16	TAP FOR 6.5 MM WITH QUICK COUPLING	SO15.INS.0469	1
17	TAP FOR 7.5 MM WITH QUICK COUPLING	SO15.INS.0470	1
18	MONO AXIAL SCREW DRIVER FOR QUICK COUPLING	SO15.INS.0471	1
19	POLY AXIAL SCREW DRIVER FOR QUICK COUPLING	SO15.INS.0472	1
20	PLUM WRENCH QUICK CHANGE	SO15.INS.0473	1
21	PEDICLE CENTRALIZER	SO15.INS.0474	1
22	BALL HANDLE PROBE STRAIGHT	SO15.INS.0475	1
23	BALL HANDLE PROBE CURVED	SO15.INS.0476	1
24	PROVISIONAL DRIVER	SO15.INS.0477	1
25	COUNTER TORQUE INNER SCREW INSERTER	SO15.INS.0478	1
26	OPEN ROD PUSHER WITH FIBER HANDLE	SO15.INS.0480	1
27	QUICK CHANGE HANDLE WITH QUICK COUPLING	SO15.INS.0482	1
28	BALL TIP PROBE SOUNDER STRAIGHT	SO15.INS.0485	1
29	BALL TIP PROBE SOUNDER CURVED - BENT	SO15.INS.0486	1
30	ROD GRIPPER FORCEPS	SO15.INS.0487	1
31	PEDICLE COMPRESSOR	SO15.INS.0488	1
32	BROKEN FORCEPS	SO15.INS.0489	1
33	REDUCTION SCREW TAB BREAKER	SO15.INS.0458	1
34	TAP FOR 4.0MM WITH QUICK COUPLING	SO15.INS.0466	1
35	TAP FOR 7.5MM WITH QUICK COUPLING	SO15.INS.0470	1
36	BREAK OFF PROTECTOR	SO15.INS.0479	1
37	I HANDLE WITH QUICK COUPLING	SO15.INS.0481	1
38	TORQUE LIMITING HANDLE - 9 NM	SO15.INS.0483	1
39	COMPOUND RESTORER	SO15.INS.0484	1
40	CORE™ SPINAL SYSTEM PEDICLE SCREW INSTRUMENT - SMALL	SO15.INS.PSI-S	1

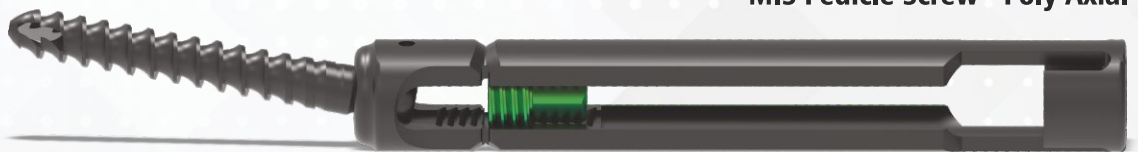


MIS Pedicle Screw - Mono Axial



LENGTH	CAT. NO. TITANIUM					
	4.5 MM	5.0 MM	5.5 MM	6.0 MM	6.5 MM	7.0 MM
25.0 MM	SP05.TIT09101	SP05.TIT09111	SP05.TIT09121	SP05.TIT09131	SP05.TIT09135	SP05.TIT09141
30.0 MM	SP05.TIT09102	SP05.TIT09112	SP05.TIT09122	SP05.TIT09132	SP05.TIT09136	SP05.TIT08765
35.0 MM	SP05.TIT09103	SP05.TIT08735	SP05.TIT08740	SP05.TIT08745	SP05.TIT08755	SP05.TIT08766
40.0 MM	SP05.TIT09104	SP05.TIT08736	SP05.TIT08741	SP05.TIT08746	SP05.TIT08756	SP05.TIT08767
45.0 MM	SP05.TIT09105	SP05.TIT09113	SP05.TIT09123	SP05.TIT08747	SP05.TIT08757	SP05.TIT09142
50.0 MM	SP05.TIT09106	SP05.TIT09114	SP05.TIT09124	SP05.TIT08748	SP05.TIT08758	SP05.TIT09143

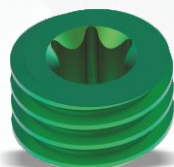
MIS Pedicle Screw - Poly Axial



LENGTH	CAT. NO. TITANIUM					
	4.5 MM	5.0 MM	5.5 MM	6.0 MM	6.5 MM	7.0 MM
25.0 MM	SP05.TIT09151	SP05.TIT09161	SP05.TIT09171	SP05.TIT09181	SP05.TIT09185	SP05.TIT09191
30.0 MM	SP05.TIT09152	SP05.TIT09162	SP05.TIT09172	SP05.TIT09182	SP05.TIT09186	SP05.TIT08811
35.0 MM	SP05.TIT09153	SP05.TIT08775	SP05.TIT08781	SP05.TIT08791	SP05.TIT08801	SP05.TIT08812
40.0 MM	SP05.TIT09154	SP05.TIT08776	SP05.TIT08782	SP05.TIT08792	SP05.TIT08802	SP05.TIT08813
45.0 MM	SP05.TIT09155	SP05.TIT09163	SP05.TIT09173	SP05.TIT08793	SP05.TIT08803	SP05.TIT09192
50.0 MM	SP05.TIT09156	SP05.TIT09164	SP05.TIT09174	SP05.TIT08794	SP05.TIT08804	SP05.TIT09193

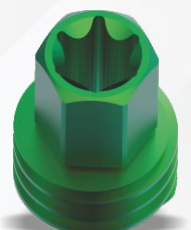
INNER NUT - MIS

DIA. / LENGTH	CAT. NO. TITANIUM
STD.	SP05.TIT09201



BROKEN NUT - MIS

DIA. / LENGTH	CAT. NO. TITANIUM
STD.	SP05.TIT09207



**Connecting Rod 5.5 mm
(Sharp Tip)**

LENGTH	CAT. NO. TITANIUM
50.0 MM	SP05.TIT08820
60.0 MM	SP05.TIT08821
70.0 MM	SP05.TIT08822
80.0 MM	SP05.TIT08823
90.0 MM	SP05.TIT08824
100.0 MM	SP05.TIT08825
110.0 MM	SP05.TIT08826
120.0 MM	SP05.TIT08827
130.0 MM	SP05.TIT08828
140.0 MM	SP05.TIT08829
150.0 MM	SP05.TIT08830
160.0 MM	SP05.TIT08831
170.0 MM	SP05.TIT08832
180.0 MM	SP05.TIT08833
190.0 MM	SP05.TIT08834
200.0 MM	SP05.TIT08835

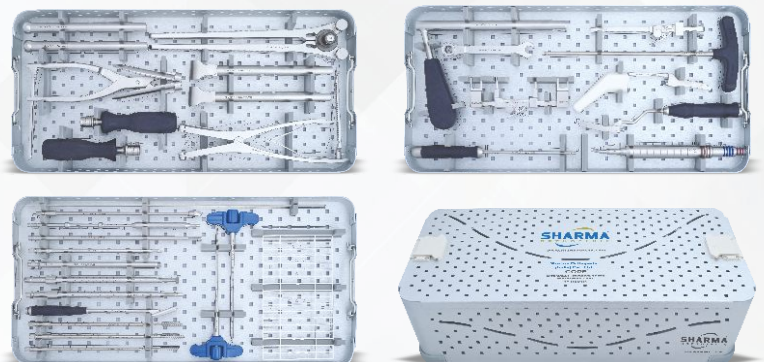


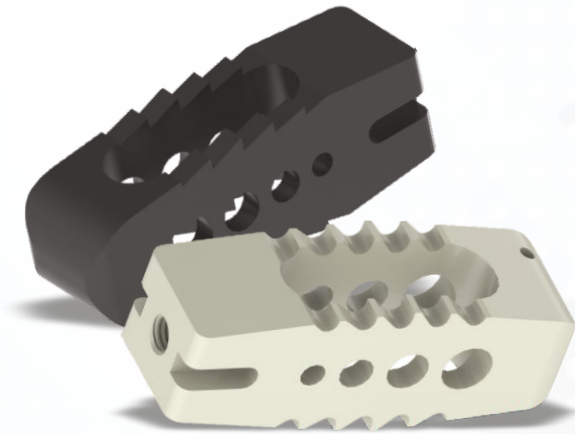
Instruments Set

SR. NO.	PRODUCT NAME	CAT NO.	QUANTITY
1	GUIDE PIN 1.5MM	SO15.INS.1151	4
2	PUNCTURE NEEDLE 3.0MM	SO15.INS.1152	2
3	DISTRACTOR 5.3MM	SO15.INS.1153	1
4	DISTRACTOR 9.4MM	SO15.INS.1154	1
5	DISTRACTOR 12.8MM	SO15.INS.1155	1
6	DISTRACTOR 16.8MM	SO15.INS.1156	1
7	DISTRACTOR 20.8MM	SO15.INS.1157	1
8	CANNULATED TAP 1.5MM / 5.0MM WITH Q.C	SO15.INS.1158	1
9	CANNULATED TAP 1.5MM / 6.0MM WITH Q.C	SO15.INS.1159	1
10	CANNULATED TAP 1.5MM / 7.0MM WITH Q.C	SO15.INS.1160	1
11	CANNULATED QUICK COUPLING HANDLE (STRAIGHT)	SO15.INS.1161	2
12	REAMER 8.0MM	SO15.INS.1162	1
13	POLY AXIAL SCREW DRIVER CANNULATED WITH Q.C	SO15.INS.1163	1
14	MONO AXIAL SCREW DRIVER CANNULATED WITH Q.C	SO15.INS.1164	1
15	COUNTER TORQUE WRENCH	SO15.INS.1165	1
16	SCREW DRIVER SW 4.0NM	SO15.INS.1166	1
17	GUIDE SLEEVE SW 4.0NM	SO15.INS.1167	1
18	T SCREW DRIVER SW 4.0NM	SO15.INS.1168	1
19	CROSS LINK SCREW DRIVER SW 3.5NM	SO15.INS.1169	1
20	ROD BENDER	SO15.INS.1170	1
21	CONNECTING ROD HOLDER WITH FIBER HANDLE	SO15.INS.1171	1
22	CONNECTING ROD HOLDER	SO15.INS.1172	1
23	BREAK OFF IRON	SO15.INS.1173	1
24	REDUCTION SLEEVE	SO15.INS.1174	1
25	REDUCTION PIN FORCEPS I	SO15.INS.1175	2
26	REDUCTION PIN FORCEPS II	SO15.INS.1176	2
27	SCREW DRIVER WITH QUICK COUPLING	SO15.INS.1177	1
28	DISTRACTOR / COMPRESSOR FORCEPS	SO15.INS.1178	1
29	LIFTING DEVICE	SO15.INS.1179	1
30	COMPRESSOR DEVISE	SO15.INS.1180	1
31	DISTRACTOR PIN (LONG)	SO15.INS.1181	2
32	POSITIONING BLOCK	SO15.INS.1182	1
33	CONTAINER FOR CORE™ MIS SPINE INSTRUMENT	SO15.INS.MIS	1

**Connecting Rod 5.5 mm
(Sharp Tip, Pre Bent)**

LENGTH	CAT. NO. TITANIUM
50.0 MM	SP05.TIT08850
60.0 MM	SP05.TIT08851
70.0 MM	SP05.TIT08852
80.0 MM	SP05.TIT08853
90.0 MM	SP05.TIT08854
100.0 MM	SP05.TIT08855
110.0 MM	SP05.TIT08856
120.0 MM	SP05.TIT08857
130.0 MM	SP05.TIT08858
140.0 MM	SP05.TIT08859
150.0 MM	SP05.TIT08860
160.0 MM	SP05.TIT08861
170.0 MM	SP05.TIT08862
180.0 MM	SP05.TIT08863
190.0 MM	SP05.TIT08864
200.0 MM	SP05.TIT08865



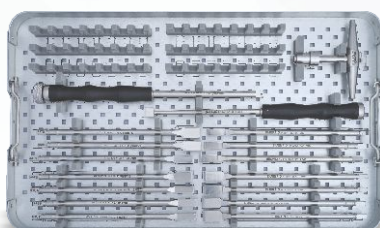
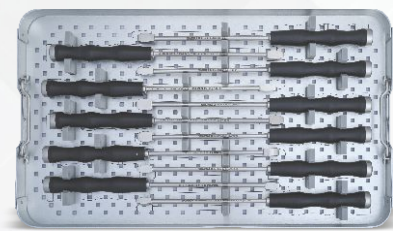
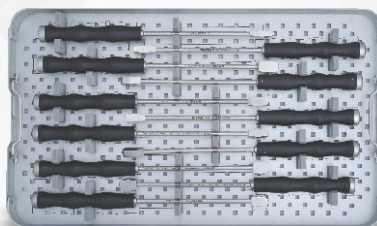
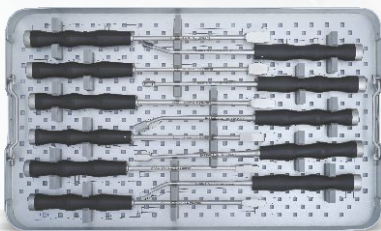


PLIF Cage

SIZE	HEIGHT	LENGTH	CAT. NO. TITANIUM	CAT. NO. PEEK
8.0 MM	10.0 MM	20.0 MM	SP05.TIT09051	SP05.P09051
9.0 MM	10.0 MM	20.0 MM	SP05.TIT09052	SP05.P09052
10.0 MM	10.0 MM	20.0 MM	SP05.TIT09053	SP05.P09053
11.0 MM	10.0 MM	20.0 MM	SP05.TIT09054	SP05.P09054
12.0 MM	10.0 MM	20.0 MM	SP05.TIT09055	SP05.P09055
13.0 MM	10.0 MM	20.0 MM	SP05.TIT09056	SP05.P09056
14.0 MM	10.0 MM	20.0 MM	SP05.TIT09057	SP05.P09057
8.0 MM	10.0 MM	22.0 MM	SP05.TIT08885	SP05.P08885
9.0 MM	10.0 MM	22.0 MM	SP05.TIT08887	SP05.P08887
10.0 MM	10.0 MM	22.0 MM	SP05.TIT08889	SP05.P08889
11.0 MM	10.0 MM	22.0 MM	SP05.TIT08891	SP05.P08891
12.0 MM	10.0 MM	22.0 MM	SP05.TIT08893	SP05.P08893
13.0 MM	10.0 MM	22.0 MM	SP05.TIT09058	SP05.P09058
14.0 MM	10.0 MM	22.0 MM	SP05.TIT09059	SP05.P09059
8.0 MM	10.0 MM	26.0 MM	SP05.TIT08886	SP05.P08886
9.0 MM	10.0 MM	26.0 MM	SP05.TIT08888	SP05.P08888
10.0 MM	10.0 MM	26.0 MM	SP05.TIT08890	SP05.P08890
11.0 MM	10.0 MM	26.0 MM	SP05.TIT08892	SP05.P08892
12.0 MM	10.0 MM	26.0 MM	SP05.TIT08894	SP05.P08894
13.0 MM	10.0 MM	26.0 MM	SP05.TIT08895	SP05.P08895
14.0 MM	10.0 MM	26.0 MM	SP05.TIT08896	SP05.P08896
8.0 MM	10.0 MM	32.0 MM	SP05.TIT08897	SP05.P08897
9.0 MM	10.0 MM	32.0 MM	SP05.TIT08898	SP05.P08898
10.0 MM	10.0 MM	32.0 MM	SP05.TIT08899	SP05.P08899
11.0 MM	10.0 MM	32.0 MM	SP05.TIT09300	SP05.P09300
12.0 MM	10.0 MM	32.0 MM	SP05.TIT09301	SP05.P09301
13.0 MM	10.0 MM	32.0 MM	SP05.TIT09302	SP05.P09302
14.0 MM	10.0 MM	32.0 MM	SP05.TIT09303	SP05.P09303

Instruments Set

SR. NO.	PRODUCT NAME	CAT NO.	QUANTITY
1	INTER SPINOUS DISTRACTOR DEVICE 4.0MM	SO15.INS.1051	1
2	INTER SPINOUS DISTRACTOR DEVICE 5.5MM	SO15.INS.1052	1
3	VERTEBRAL SIZER 8.0MM X 10.0MM X 20.0MM	SO15.INS.1053	1
4	VERTEBRAL SIZER 9.0MM X 10.0MM X 20.0MM	SO15.INS.1040	1
5	VERTEBRAL SIZER 10.0MM X 10.0MM X 20.0MM	SO15.INS.1054	1
6	VERTEBRAL SIZER 12.0MM X 10.0MM X 20.0MM	SO15.INS.1055	1
7	VERTEBRAL SIZER 11.0MM X 10.0MM X 20.0MM	SO15.INS.1041	1
8	VERTEBRAL SIZER 13.0MM X 10.0MM X 20.0MM	SO15.INS.1042	1
9	VERTEBRAL SIZER 14.0MM X 10.0MM X 20.0MM	SO15.INS.1056	1
10	VERTEBRAL SIZER 8.0MM X 10.0MM X 22.0MM	SO15.INS.1057	1
11	VERTEBRAL SIZER 9.0MM X 10.0MM X 22.0MM	SO15.INS.1043	1
12	VERTEBRAL SIZER 10.0MM X 10.0MM X 22.0MM	SO15.INS.1058	1
13	VERTEBRAL SIZER 11.0MM X 10.0MM X 22.0MM	SO15.INS.1044	1
14	VERTEBRAL SIZER 12.0MM X 10.0MM X 22.0MM	SO15.INS.1059	1
15	VERTEBRAL SIZER 13.0MM X 10.0MM X 22.0MM	SO15.INS.1045	1
16	VERTEBRAL SIZER 14.0MM X 10.0MM X 22.0MM	SO15.INS.1060	1
17	VERTEBRAL SIZER 8.0MM X 10.0MM X 26.0MM	SO15.INS.1061	1
18	VERTEBRAL SIZER 9.0MM X 10.0MM X 26.0MM	SO15.INS.1046	1
19	VERTEBRAL SIZER 10.0MM X 10.0MM X 26.0MM	SO15.INS.1062	1
20	VERTEBRAL SIZER 11.0MM X 10.0MM X 26.0MM	SO15.INS.1047	1
21	VERTEBRAL SIZER 12.0MM X 10.0MM X 26.0MM	SO15.INS.1063	1
22	VERTEBRAL SIZER 13.0MM X 10.0MM X 26.0MM	SO15.INS.1048	1
23	VERTEBRAL SIZER 14.0MM X 10.0MM X 26.0MM	SO15.INS.1064	1
24	VERTEBRAL SIZER 8.0MM X 10.0MM X 32.0MM	SO15.INS.1065	1
25	VERTEBRAL SIZER 9.0MM X 10.0MM X 32.0MM	SO15.INS.1049	1
26	VERTEBRAL SIZER 10.0MM X 10.0MM X 32.0MM	SO15.INS.1066	1
27	VERTEBRAL SIZER 11.0MM X 10.0MM X 32.0MM	SO15.INS.1050	1
28	VERTEBRAL SIZER 12.0MM X 10.0MM X 32.0MM	SO15.INS.1067	1
29	VERTEBRAL SIZER 13.0MM X 10.0MM X 32.0MM	SO15.INS.1084	1
30	VERTEBRAL SIZER 14.0MM X 10.0MM X 32.0MM	SO15.INS.1068	1
31	DISTRACTOR HANDLE	SO15.INS.1069	2
32	CAGE HOLDER	SO15.INS.1070	1
33	FORK HAMMER	SO15.INS.1071	1
34	POSTERIOR LUMBER COMPACTOR BOX	SO15.INS.1072	1
35	POSTERIOR LUMBER COMPACTOR HANDLE	SO15.INS.1073	1
36	STRIPPER WITH FIBER HANDLE 14.0MM	SO15.INS.1074	1
37	ELBOW CURETTE 6.0MM	SO15.INS.1075	1
38	REAMER WITH FIBER HANDLE 8.0MM X 6.5MM	SO15.INS.1076	1
39	REAMER WITH FIBER HANDLE 8.5MM X 7.5MM	SO15.INS.1077	1
40	REAMER WITH FIBER HANDLE 9.5MM X 8.5MM	SO15.INS.1078	1
41	REAMER WITH FIBER HANDLE 10.0MM X 10.5MM	SO15.INS.1079	1
42	REAMER WITH FIBER HANDLE 10.5MM X 11.5MM	SO15.INS.1080	1
43	SCRAPER WITH FIBER HANDLE 7.0MM	SO15.INS.1081	1
44	SCRAPER WITH FIBER HANDLE 8.0MM	SO15.INS.1082	1
45	SCRAPER WITH FIBER HANDLE 9.0MM	SO15.INS.1083	1
46	STRIPPER - 14MM	SO15.INS.4815	1
47	ELBOW CURETTE 12MM	SO15.INS.4820	1
48	HELD EXTRACTOR	SO15.INS.4825	1
49	CONTAINER FOR CORE™ (PLIF) POSTERIOR LUMBAR INTERBODY FUSION CAGE INSTRUMENT	SO15.INS.PLIFC	1



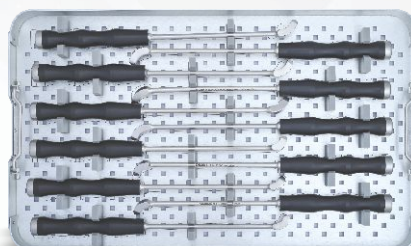
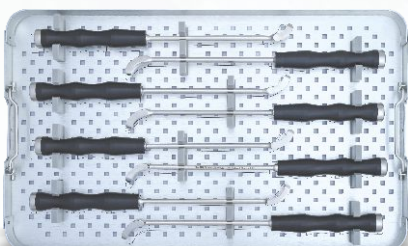
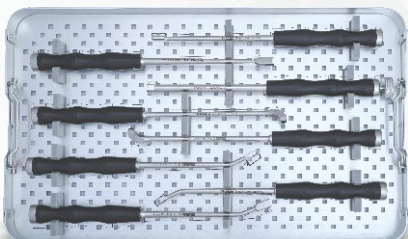
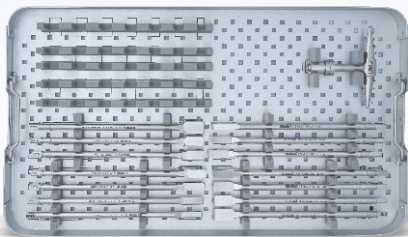


TLIF Cage

SIZE	HEIGHT	LENGTH	CAT. NO. TITANIUM	CAT. NO. PEEK
8.0 MM	8.0 MM	23.0 MM	SP05.TIT09078	SP05.P09078
9.0 MM	8.0 MM	23.0 MM	SP05.TIT09079	SP05.P09079
10.0 MM	8.0 MM	23.0 MM	SP05.TIT09080	SP05.P09080
11.0 MM	8.0 MM	23.0 MM	SP05.TIT09081	SP05.P09081
12.0 MM	8.0 MM	23.0 MM	SP05.TIT09082	SP05.P09082
13.0 MM	8.0 MM	23.0 MM	SP05.TIT09083	SP05.P09083
14.0 MM	8.0 MM	23.0 MM	SP05.TIT09084	SP05.P09084
8.0 MM	8.0 MM	28.0 MM	SP05.TIT09085	SP05.P09085
9.0 MM	8.0 MM	28.0 MM	SP05.TIT09086	SP05.P09086
10.0 MM	8.0 MM	28.0 MM	SP05.TIT09087	SP05.P09087
11.0 MM	8.0 MM	28.0 MM	SP05.TIT09088	SP05.P09088
12.0 MM	8.0 MM	28.0 MM	SP05.TIT09089	SP05.P09089
13.0 MM	8.0 MM	28.0 MM	SP05.TIT09090	SP05.P09090
14.0 MM	8.0 MM	28.0 MM	SP05.TIT09091	SP05.P09091
8.0 MM	8.0 MM	33.0 MM	SP05.TIT09092	SP05.P09092
9.0 MM	8.0 MM	33.0 MM	SP05.TIT09093	SP05.P09093
10.0 MM	8.0 MM	33.0 MM	SP05.TIT09094	SP05.P09094
11.0 MM	8.0 MM	33.0 MM	SP05.TIT09095	SP05.P09095
12.0 MM	8.0 MM	33.0 MM	SP05.TIT09096	SP05.P09096
13.0 MM	8.0 MM	33.0 MM	SP05.TIT09097	SP05.P09097
14.0 MM	8.0 MM	33.0 MM	SP05.TIT09098	SP05.P09098

Instruments Set

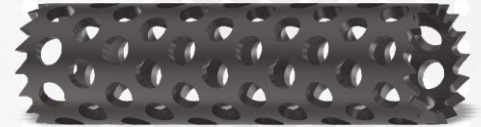
SR. NO.	PRODUCT NAME	CAT NO.	QUANTITY
1	HOLDER	SO15.INS.1001	1
2	TEMPLATE 8MM X 23MM	SO15.INS.1002	1
3	TEMPLATE 8MM X 28MM	SO15.INS.1003	1
4	TEMPLATE 8MM X 33MM	SO15.INS.1004	1
5	TEMPLATE 9MM X 23MM	SO15.INS.0992	1
6	TEMPLATE 9MM X 28MM	SO15.INS.0993	1
7	TEMPLATE 9MM X 33MM	SO15.INS.0994	1
8	TEMPLATE 10MM X 23MM	SO15.INS.1005	1
9	TEMPLATE 10MM X 28MM	SO15.INS.1006	1
10	TEMPLATE 10MM X 33MM	SO15.INS.1007	1
11	TEMPLATE 11MM X 23MM	SO15.INS.0995	1
12	TEMPLATE 11MM X 28MM	SO15.INS.0996	1
13	TEMPLATE 11MM X 33MM	SO15.INS.0997	1
14	TEMPLATE 12MM X 23MM	SO15.INS.1008	1
15	TEMPLATE 12MM X 28MM	SO15.INS.1009	1
16	TEMPLATE 12MM X 33MM	SO15.INS.1010	1
17	TEMPLATE 13MM X 23MM	SO15.INS.0998	1
18	TEMPLATE 13MM X 28MM	SO15.INS.0999	1
19	TEMPLATE 13MM X 33MM	SO15.INS.1000	1
20	TEMPLATE 14MM X 23MM	SO15.INS.1011	1
21	TEMPLATE 14MM X 28MM	SO15.INS.1012	1
22	TEMPLATE 14MM X 33MM	SO15.INS.1013	1
23	TEMPLATE HOLDER	SO15.INS.1014	1
24	COMPACTOR CASE	SO15.INS.1015	1
25	PUSHER STRAIGHT	SO15.INS.1016	1
26	PUSHER CURVED	SO15.INS.1017	1
27	GUIDE	SO15.INS.1018	1
28	REAMER 7.0MM	SO15.INS.1019	1
29	REAMER 8.0MM	SO15.INS.1020	1
30	REAMER 9.0MM	SO15.INS.1021	1
31	REAMER 10.0MM	SO15.INS.1022	1
32	REAMER 11.0MM	SO15.INS.1023	1
33	REAMER 12.0MM	SO15.INS.1024	1
34	REAMER 13.0MM	SO15.INS.1025	1
35	COMPACTOR	SO15.INS.1026	1
36	SCRAPER WITH FIBER HANDLE	SO15.INS.1027	1
37	CURETTER RIGH WITH FIBER HANDLE (LEFT)	SO15.INS.1028	1
38	CURETTER RIGH WITH FIBER HANDLE (RIGHT)	SO15.INS.1029	1
39	CURETTER RIGH BENT WITH FIBER HANDLE (LEFT)	SO15.INS.1030	1
40	CURETTER RIGH BENT WITH FIBER HANDLE (RIGHT)	SO15.INS.1031	1
41	RETRACTOR 7.0MM	SO15.INS.1032	1
42	RETRACTOR 8.0MM	SO15.INS.1033	1
43	RETRACTOR 9.0MM	SO15.INS.1034	1
44	RETRACTOR 10.0MM	SO15.INS.1035	1
45	RETRACTOR 11.0MM	SO15.INS.1036	1
46	RETRACTOR 12.0MM	SO15.INS.1037	1
47	RETRACTOR 13.0MM	SO15.INS.1038	1
48	T HANDLE WITH QUICK COUPLING	SO15.INS.1039	2
49	CONTAINER FOR CORE™ (TLIF) TRANSFORAMINAL LUMBAR INTERBODY FUSION CAGE INSTRUMENT	SO15.INS.TLIFC	1





Expandable Cage

HOLES / LENGTH	CAT. NO. TITANIUM
12.0 MM X 20.0 MM X 25.0 MM	SP05.TIT09320
12.0 MM X 25.0 MM X 35.0 MM	SP05.TIT09321
12.0 MM X 35.0 MM X 55.0 MM	SP05.TIT09322
12.0 MM X 55.0 MM X 75.0 MM	SP05.TIT09323
14.0 MM X 20.0 MM X 25.0 MM	SP05.TIT09324
14.0 MM X 25.0 MM X 35.0 MM	SP05.TIT09325
14.0 MM X 35.0 MM X 55.0 MM	SP05.TIT09326
14.0 MM X 55.0 MM X 75.0 MM	SP05.TIT09327
16.0 MM X 20.0 MM X 25.0 MM	SP05.TIT09328
16.0 MM X 25.0 MM X 35.0 MM	SP05.TIT09329
16.0 MM X 35.0 MM X 55.0 MM	SP05.TIT09330
16.0 MM X 55.0 MM X 75.0 MM	SP05.TIT09331
18.0 MM X 20.0 MM X 25.0 MM	SP05.TIT09332
18.0 MM X 25.0 MM X 35.0 MM	SP05.TIT09333
18.0 MM X 35.0 MM X 55.0 MM	SP05.TIT09334
18.0 MM X 55.0 MM X 75.0 MM	SP05.TIT09335
20.0 MM X 20.0 MM X 25.0 MM	SP05.TIT09336
20.0 MM X 25.0 MM X 35.0 MM	SP05.TIT09337
20.0 MM X 35.0 MM X 55.0 MM	SP05.TIT09338
20.0 MM X 55.0 MM X 75.0 MM	SP05.TIT09339



Mesh Cage

SIZE	CAT. NO. TITANIUM
10.0 MM X 12.0 MM	SP05.TIT09694
10.0 MM X 20.0 MM	SP05.TIT08919
10.0 MM X 40.0 MM	SP05.TIT08920
10.0 MM X 60.0 MM	SP05.TIT08921
10.0 MM X 90.0 MM	SP05.TIT08922
10.0 MM X 120.0 MM	SP05.TIT09060
12.0 MM X 20.0 MM	SP05.TIT09061
12.0 MM X 40.0 MM	SP05.TIT09062
12.0 MM X 60.0 MM	SP05.TIT08923
12.0 MM X 90.0 MM	SP05.TIT08924
12.0 MM X 120.0 MM	SP05.TIT09063
14.0 MM X 20.0 MM	SP05.TIT09064
14.0 MM X 40.0 MM	SP05.TIT09065
14.0 MM X 45.0 MM	SP05.TIT09695
14.0 MM X 50.0 MM	SP05.TIT09696
14.0 MM X 60.0 MM	SP05.TIT08925
14.0 MM X 90.0 MM	SP05.TIT08926
14.0 MM X 120.0 MM	SP05.TIT08927
16.0 MM X 20.0 MM	SP05.TIT09066
16.0 MM X 25.0 MM	SP05.TIT09697
16.0 MM X 30.0 MM	SP05.TIT09698
16.0 MM X 35.0 MM	SP05.TIT09699
16.0 MM X 40.0 MM	SP05.TIT09067
16.0 MM X 60.0 MM	SP05.TIT09068
16.0 MM X 90.0 MM	SP05.TIT08928
16.0 MM X 120.0 MM	SP05.TIT08929
18.0 MM X 20.0 MM	SP05.TIT09069
18.0 MM X 40.0 MM	SP05.TIT09070
18.0 MM X 60.0 MM	SP05.TIT09071
18.0 MM X 90.0 MM	SP05.TIT08930
18.0 MM X 120.0 MM	SP05.TIT08931
20.0 MM X 20.0 MM	SP05.TIT09072
20.0 MM X 40.0 MM	SP05.TIT09073
20.0 MM X 60.0 MM	SP05.TIT09074
20.0 MM X 90.0 MM	SP05.TIT08932
20.0 MM X 120.0 MM	SP05.TIT08933
22.0 MM X 20.0 MM	SP05.TIT09075
22.0 MM X 40.0 MM	SP05.TIT09076
22.0 MM X 60.0 MM	SP05.TIT09077
22.0 MM X 90.0 MM	SP05.TIT08934
22.0 MM X 120.0 MM	SP05.TIT08935

Instruments Set [Expandable Cage]

SR. NO.	PRODUCT NAME	CAT NO.	QUANTITY
1	CAGE HOLDING FORCEPS	SO15.INS.4724	1
2	CAGE CUTTER	SO15.INS.4725	1
3	IMPLANT MEASURE 10-12MM	SO15.INS.4726	1
4	IMPLANT MEASURE 16-18MM	SO15.INS.4727	1
5	IMPLANT MEASURE 22-25MM	SO15.INS.4728	1
6	OSTEOTRIIBE	SO15.INS.4729	1
7	CAGE STAND	SO15.INS.4730	1
8	PRESSURE 6MM	SO15.INS.4731	1
9	PRESSURE 12MM	SO15.INS.4732	1
10	PRESSURE 18MM	SO15.INS.4733	1
11	ALUMINIUM BOX	SO15.INS.4734	1
12	EXPANDABLE ROTATOR STRAIGHT	SO15.INS.4735	1
13	EXPANDABLE ROTATOR CURVED	SO15.INS.4740	1
14	EXPANDABLE PUSHER STRAIGHT	SO15.INS.4745	1
15	EXPANDABLE PUSHER CURVED	SO15.INS.4750	1
16	EXPANDABLE CAGE HOLDER STRAIGHT	SO15.INS.4755	1
17	EXPANDABLE CAGE HOLDER CURVED	SO15.INS.4760	1
18	EXPANDABLE LOCKED SCREW DRIVER	SO15.INS.4765	1
19	CONTAINER FOR CORE™ EXPANDABLE CAGE INSTRUMENT	SO15.INS.ECIS	1

Instruments Set [Mesh Cage]

SR. NO.	PRODUCT NAME	CAT NO.	QUANTITY
1	COMPACTOR WITH FIBER HANDLE 7.0MM	SO15.INS.1275	1
2	COMPACTOR WITH FIBER HANDLE 13.0MM	SO15.INS.1276	1
3	COMPACTOR BOX	SO15.INS.1277	2
4	CAGE MEASURE	SO15.INS.1278	1
5	CAGE PUSHER STRAIGHT WITH FIBER HANDLE	SO15.INS.1279	1
6	CAGE PUSHER BEND WITH FIBER HANDLE	SO15.INS.1280	2
7	CAGE HOLDER WITH FIBER HANDLE	SO15.INS.1281	1
8	CAGE CUTTER	SO15.INS.1282	1
9	CONTAINER FOR CORE™ MESH CAGE INSTRUMENT	SO15.INS.CIS	1



Sharma Orthopedic (India) Pvt. Ltd.

445/A, G.I.D.C. Estate, Waghodia - 391 760, Dist. Vadodara, Gujarat, India.
CIN : U33110GJ2014PTC081007 GSTIN : 24AAVCS0195E1Z5
Tele No. : +91 7284003123 / 7284003125 / 7698881526 Toll Free : 18001234979
Email : info@sharmaortho.com, exports@sharmaortho.com
Website : www.sharmaortho.com / www.sharma-healthcare.com